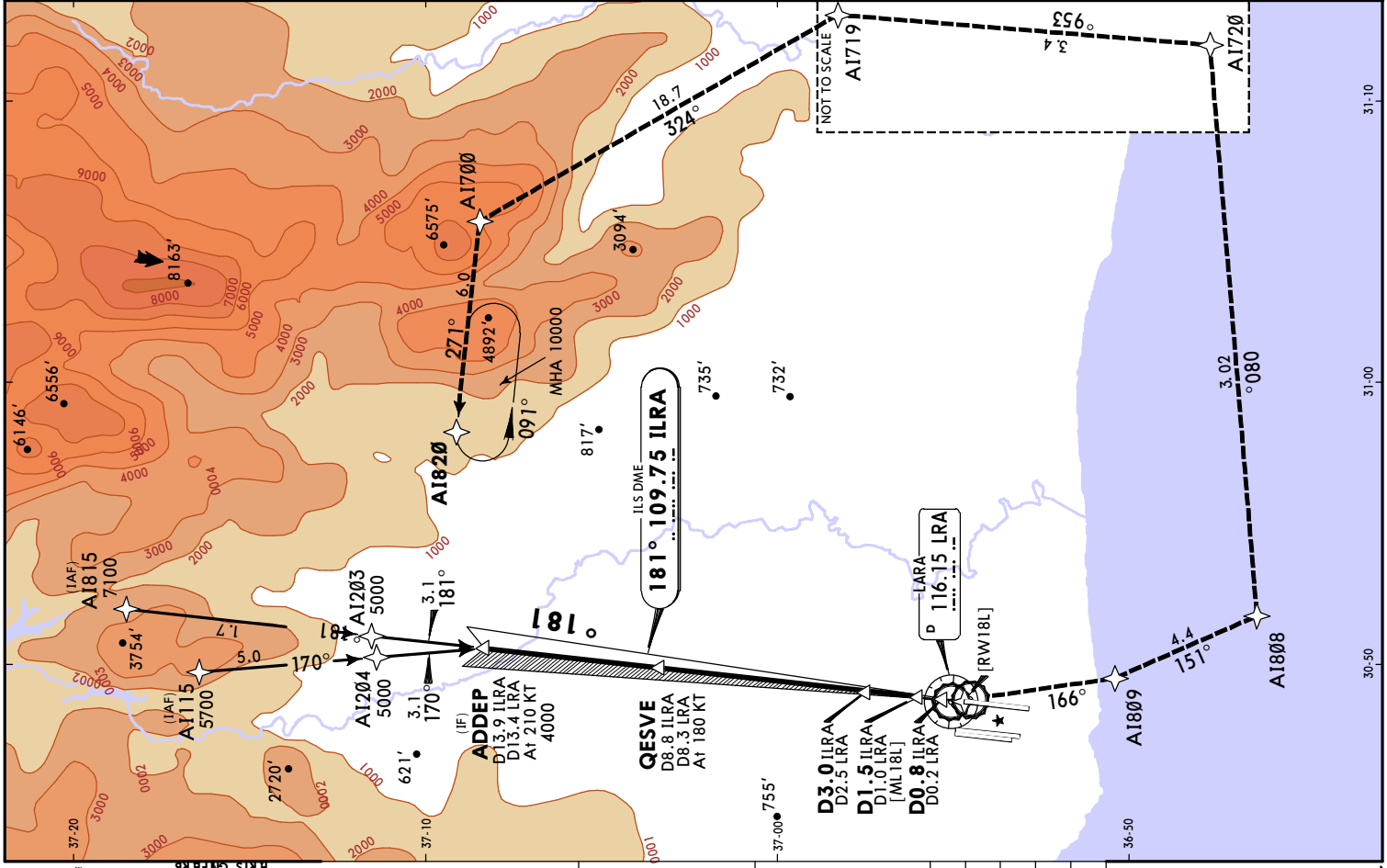


© JEPPESEN, 2024, 2025. ALL RIGHTS RESERVED.

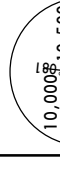
D-ATIS Arrival		ANTALYA Approach (R)				ANTALYA Tower				Ground	
118.275	LOC ILRA	119.025	124.350	124.425	119.8	120.125	126.1	119.85	121.7	121.9	
109.75	Final Apch Crs	181°	QESVE MANDATORY	3000' (2824')	ILS DA(H)	376' (200')	Apt Elev	177'	Rwy	176'	
MISSED APCH: Do not turn to AI809 before Rwy 18L Threshold. Climb on track 166°, turn LEFT to AI809, turn LEFT to AI808, turn LEFT to AI720, turn LEFT to AI719, turn LEFT to AI700, turn LEFT to AI820 and hold at 10000'.											
Alt Set: hPa		Rwy Elev: 6 hPa		Trans level: By ATC		Trans alt: 15000'					
1. P-RNAV approval required. 2. P-RNAV AI1115 & AI815 transitions and missed apch phase GNSS required. 3. Radar required. 4. DME required.											
CAUTION:											
1. ATC will clear the aircraft to the ILS Approach Procedure before IAF (AI1115, AI815) for Rwy 18L. As soon as such an instruction is received, the aircraft shall completely follow the procedure (including the P-RNAV transition) for Rwy 18L.											
2. Do not engage ILS before Localizer intercept point ADDEP.											
3. Descent on the GP below 3000' not permitted until passing QESVE.											
4. The aircraft are required to comply with the level and speed restrictions depicted on the procedure.											
5. The speed restrictions are to be flown as accurately as possible (accurate within 5 KT).											
6. Aircraft unable to conform to these speeds shall inform ATC and state what speeds to be used.											
ILRA DME		2.0	3.0	4.0	5.0	6.0	7.0	8.0			
ALTITUDE		810'	1140'	1460'	1780'	2100'	2420'	2750'			
Std/State		ILS		STRAIGHT-IN LANDING		LOC (GS out)		CIRCLE-TO-LAND			
DA(H)		376' (200')		2 DA/MDA(H) 680' (504')		CDFA					
TDZ or CL out		ALS out		ALS out		Max KT					
A		R550m		R1200m		R1500m		1100' (923')		V1500m	
B		R550m		R1200m		R1500m		1100' (923')		V1600m	
C		R550m		R1200m		R1500m		1100' (923')		V2400m	
D		R550m		R1200m		R1500m		1100' (923')		V3600m	
1 R750m when a Flight Director or Autopilot or HUD to DA is not used. 2 VNAV DA(H) in lieu of MDA(H) depends on operator policy.											

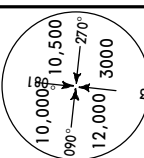




© JEPPESEN, 2008, 2025. ALL RIGHTS RESERVED.



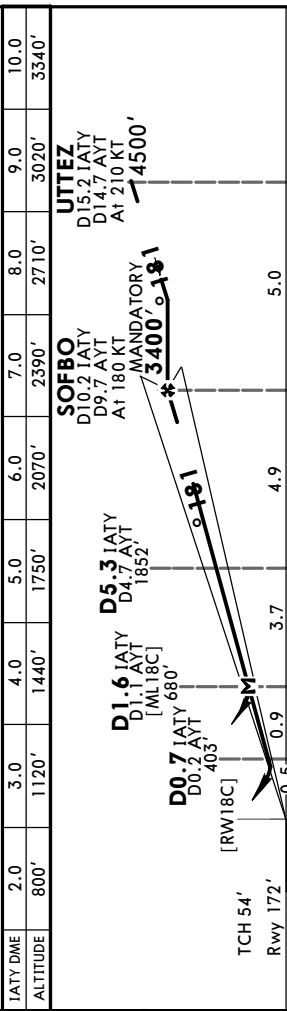
D-ATIS Arrival		ANTALYA Approach (R)			ANTALYA Tower			Ground		
118.275	119.025	124.350	124.425	119.8	120.125	126.1	119.85	121.7	121.9	
LOC IATY	108.7	Final Apch Crs	181°	SOFBO MANDATORY	3400' (3228')	ILS DA(H)	372' (200')	Apt Elev	177'	
MISSED APCH: Do not turn to A1109 before Rwy 18C Threshold. Climb on track 196°, turn RIGHT to A1109, turn LEFT to A1108, turn RIGHT to A1107, turn RIGHT to A1106, turn LEFT to A1121, turn RIGHT to A1120, to A1119 and hold at 8000'.										
Alt Set: hPa				Rwy Elev: 6 hPa			Trans level: By ATC			
Trans alt: 15000'										
1. P-RNAV approval required. 2. P-RNAV A1115 & A1815 transitions and missed apch phase GNSS required.										
3. Radar required. 4. DME required.										



**CAUTION:**

1. ATC will clear the aircraft to the ILS Approach Procedure before IAF (A1115, A1815) for Rwy 18C. As soon as such an instruction is received, the aircraft shall completely follow the procedure (including the P-RNAV transition) for Rwy 18C.
2. Do not engage ILS before Localizer intercept point UTTEZ.
3. Descent on the GP below 3400' not permitted until passing SOFBO.
4. The aircraft are required to comply with the level and speed restrictions depicted on the procedure.
5. The speed restrictions are to be flown as accurately as possible (accurate within 5 KT).
6. Aircraft unable to conform to these speeds shall inform ATC and state what speeds to be used.

IATY DME	2.0	3.0	4.0	5.0	6.0	7.0	8.0	9.0	10.0
ALTITUDE	800'	1120'	1440'	1750'	2070'	2390'	2710'	3020'	3340'



0.3									
Gnd speed-Kts		70	90	100	120	140	160	HIALS	
GS		3.00°	372	478	531	637	743	849	REIL PAPI
MAP at DI.6 IATY/DI.1 AYT									
Std/State		ILS						CIRCLE-TO-LAND	
STRAIGHT-IN LANDING									
LOC (GS out)									
CDA									
DA(H) 372'(200')									
2 DA/MDA(H) 680'(508')									
Max KT									
A		ALS out						ALS out	
B		R1200m						R1500m	
C		R550m						R1600m	
D		R1600m						R2400m	
1 R750m when a Flight Director or Autopilot or HUD to DA is not used.									
2 VNAV DA(H) in lieu of MDA(H) depends on operator policy.									
								MDA(H)	
								1100'(923') V1500m	
								1100'(923') V1600m	
								1100'(923') V2400m	
								1100'(923') V3600m	

LTAI/AYT  
ANTALYA INTL

JEPPESSEN  
9 MAY 25  
Eff 15 May (11-5)

ANTALYA, TURKIYE  
ILS Z or LOC Z Rwy 36C

BRIEFING STRIP

D-ATIS Arrival

118.275

ANTALYA Approach (R)

119.025 124.350 124.425

ANTALYA Tower

119.8 120.125 126.1

Ground

119.85 121.7 121.9

LOC  
IAYT  
110.3

Final  
Apch Crs  
001°

D6.1 AYT  
1500' (1326')

ILS  
DA(H)  
374' (200')

Apt Elev 177'  
Rwy 174'

MISSED APCH: Climb on R-328 AYT to 1250' ❶, then turn LEFT (not before D5.0 AYT) climbing to 2700' proceed to VOR then TOPUZ and hold.

Alt Set: hPa

Rwy Elev: 6 hPa

Trans level: By ATC

Trans alt: 15000'

180°

10,000

10,500

090°

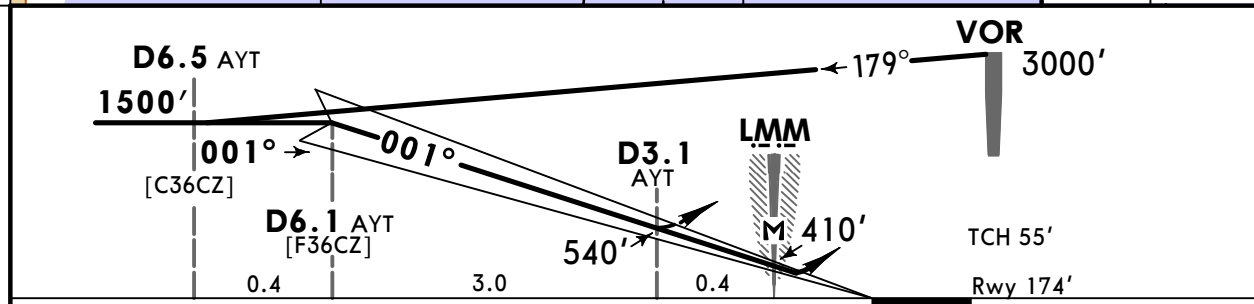
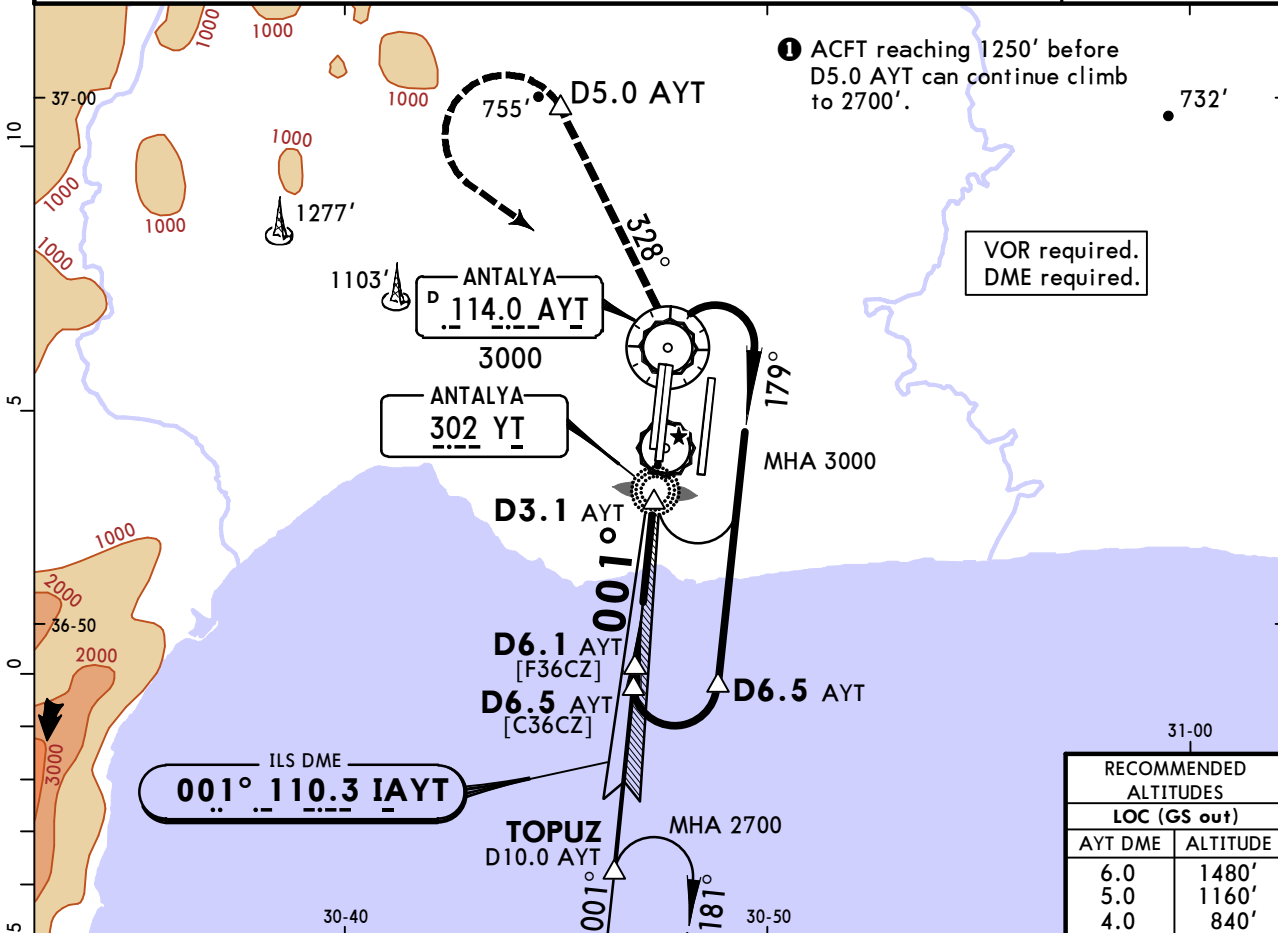
270°

12,000

3000

360°

MSA AYT VOR



Gnd speed-Kts	70	90	100	120	140	160		1250' on 114.0 R-328
GS	3.00°	372	478	531	637	849		
MAP at LMM								

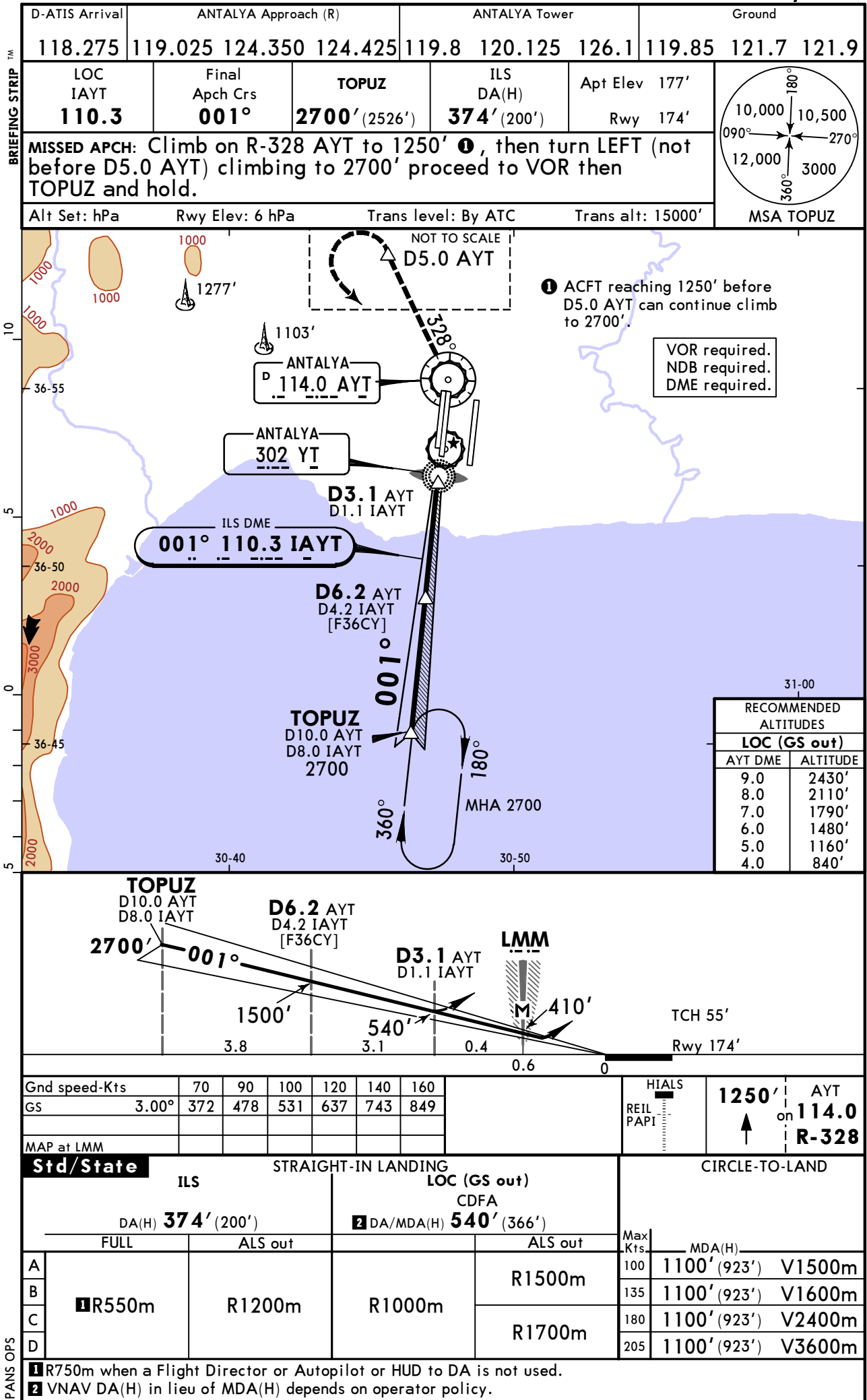
Std/State		STRAIGHT-IN LANDING		CIRCLE-TO-LAND	
ILS		LOC (GS out)		CDFA	
DA(H) <b>374'</b> (200')		DA/MDA(H) <b>540'</b> (366')			
FULL		ALS out		ALS out	
A					Max Kts
B	<b>1</b> R550m	R1200m	R1000m	R1500m	100
C					135
D					180
					205
					MDA(H)
					1100' (923') V1500m
					1100' (923') V1600m
					1100' (923') V2400m
					1100' (923') V3600m

❶ R750m when a Flight Director or Autopilot or HUD to DA is not used.  
❷ VNAV DA(H) in lieu of MDA(H) depends on operator policy.

LTAI/AYT  
ANTALYA INTL

JEPPESSEN  
9 MAY 25  
Eff 15 May (11-6)

ANTALYA, TURKIYE  
ILS Y or LOC Y Rwy 36C

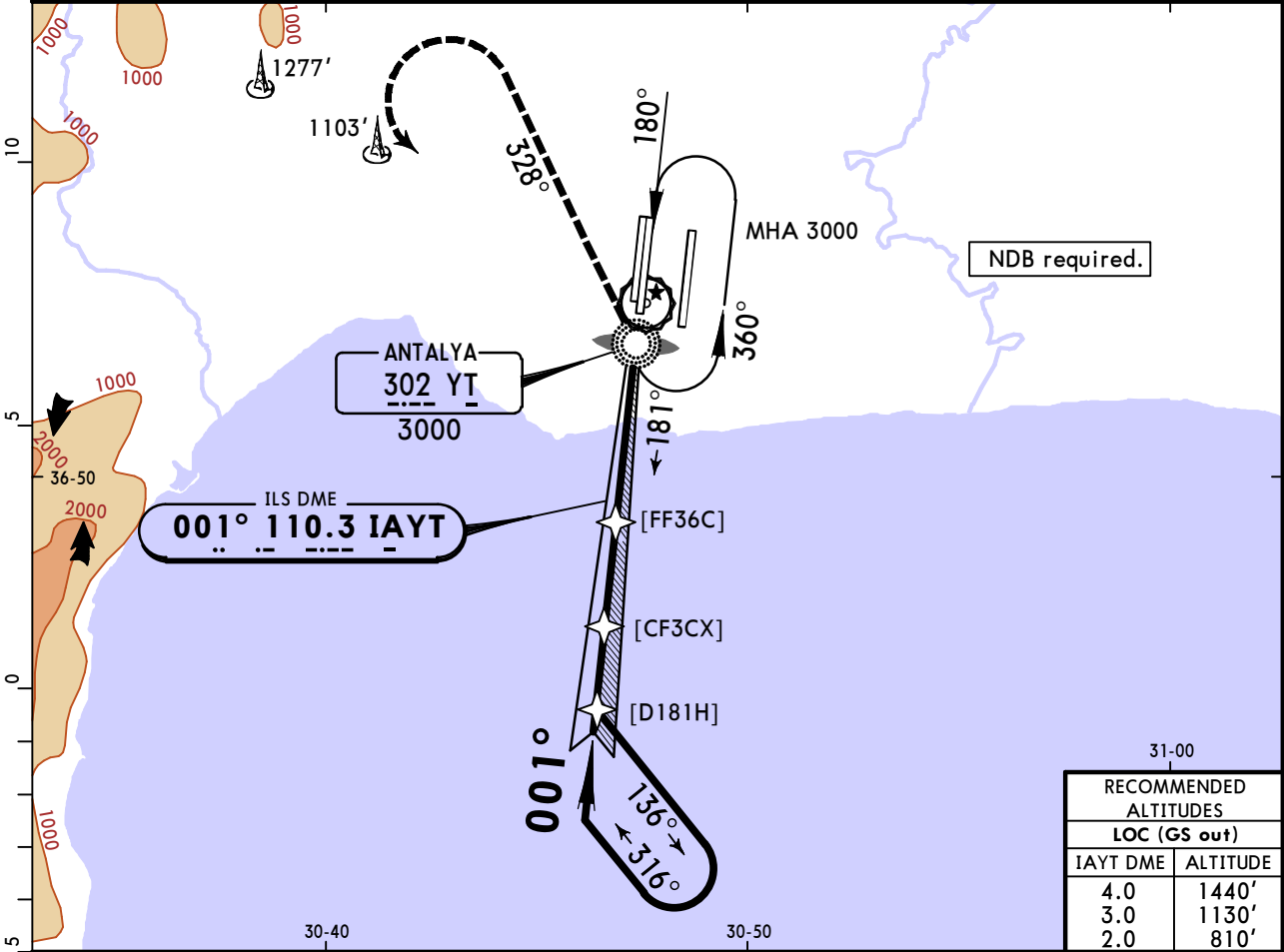


LTAI/AYT  
ANTALYA INTL

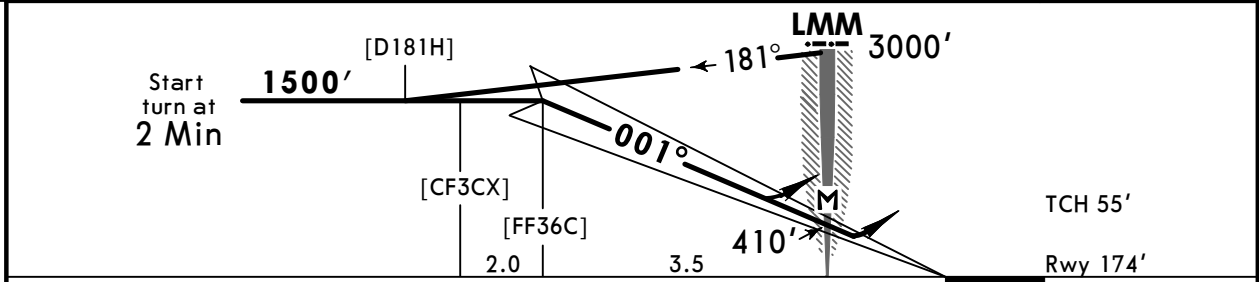
JEPPESSEN  
9 MAY 25  
Eff 15 May 11-7

ANTALYA, TURKIYE  
ILS X or LOC X Rwy 36C

D-ATIS Arrival	ANTALYA Approach (R)			ANTALYA Tower			Ground		
118.275	119.025	124.350	124.425	119.8	120.125	126.1	119.85	121.7	121.9
LOC IAYT <b>110.3</b>	Final Apch Crs <b>001°</b>	[FF36C] <b>1500'</b> (1326')	ILS DA(H) <b>374'</b> (200')	Apt Elev 177' Rwy 174'					
MISSED APCH: Climb on 328° from NDB to 2000', then climbing turn LEFT to 3000' to NDB and hold.									
Alt Set: hPa		Rwy Elev: 6 hPa		Trans level: By ATC		Trans alt: 15000'			
MSA YT NDB									



RECOMMENDED ALTITUDES	
LOC (GS out)	
IAYT DME	ALTITUDE
4.0	1440'
3.0	1130'
2.0	810'



							0.5	0		
Gnd speed-Kts	70	90	100	120	140	160			2000'	328°
GS	3.00°	372	478	531	637	743				
MAP at LMM									↑	YT
										302

Std/State		STRAIGHT-IN LANDING		CIRCLE-TO-LAND	
ILS		LOC (GS out) CDFA			
DA(H) <b>374'</b> (200')		DA/MDA(H) <b>540'</b> (366')			
ALS out		ALS out		Max Kts	MDA(H)
A			R1500m	100	1100' (923') V1500m
B	R550m	R1200m	R1000m	135	1100' (923') V1600m
C				180	1100' (923') V2400m
D			R1700m	205	1100' (923') V3600m

1 R750m when a Flight Director or Autopilot or HUD to DA is not used.  
2 VNAV DA(H) in lieu of MDA(H) depends on operator policy.

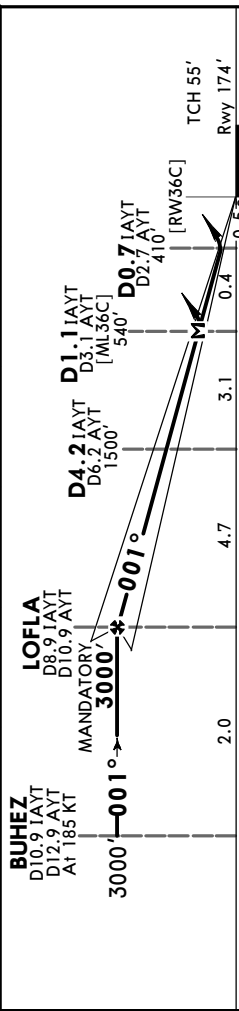


D-ATIS Arrival		ANTALYA Approach (R)				ANTALYA Tower			Ground				
118.275		119.025		124.350		124.425		119.8	120.125	126.1	119.85	121.7	121.9
LOC IAYT		Final Apch Crs		LOFLA MANDATORY		ILS DA(H)		Apt Elev		<div><div><div>10,000' 10,500'</div><div>270°</div><div>090°</div><div>12,000' 3000'</div><div>200'</div></div><div>MSA AYT VOR</div></div>			
110.3		001°		3000' (2826')		374' (200')		Rwy 174'					
MISSD APCH: Do not turn to A1309 before Rwy 36C Threshold. Climb on track 341°, turn LEFT to A1309, turn LEFT to A1321, turn LEFT to A1320, to A1319, to A1318, to A1317, to A1316, turn LEFT to A1315 and hold at 5000'.													
Alt Set: hPa Rwy Elev: 6 hPa Trans level: By ATC Trans alt: 15000'.													
1. P-RNAV approval required. 2. P-RNAV A1315 & A1618 transitions and missed apch phase GNSS required.													
3. Radar required. 4. DME required.													

CAUTION:

1. ATC will clear the aircraft to the ILS Approach Procedure before IAF (AI315, AI618) for Rwy 36C. As soon as such an instruction is received, the aircraft shall completely follow the procedure (including the P-RNAV transition) for Rwy 36C.
2. Do not engage ILS before Localizer intercept point BUHEZ.
3. Descent on the GP below 3000' not permitted until passing BUHEZ.
4. The aircraft are required to comply with the level and speed restrictions depicted on the procedure.
5. The speed restrictions are to be flown as accurately as possible (accurate within 5 KT).
6. Aircraft unable to conform to these speeds shall inform ATC and state what speeds to be used.

IAYT DME	8.0	7.0	6.0	5.0	4.0	3.0	2.0
ALTITUDE	2720'	2400'	2080'	1760'	1440'	1130'	810'

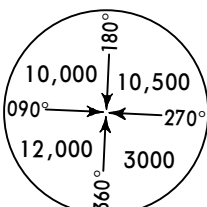


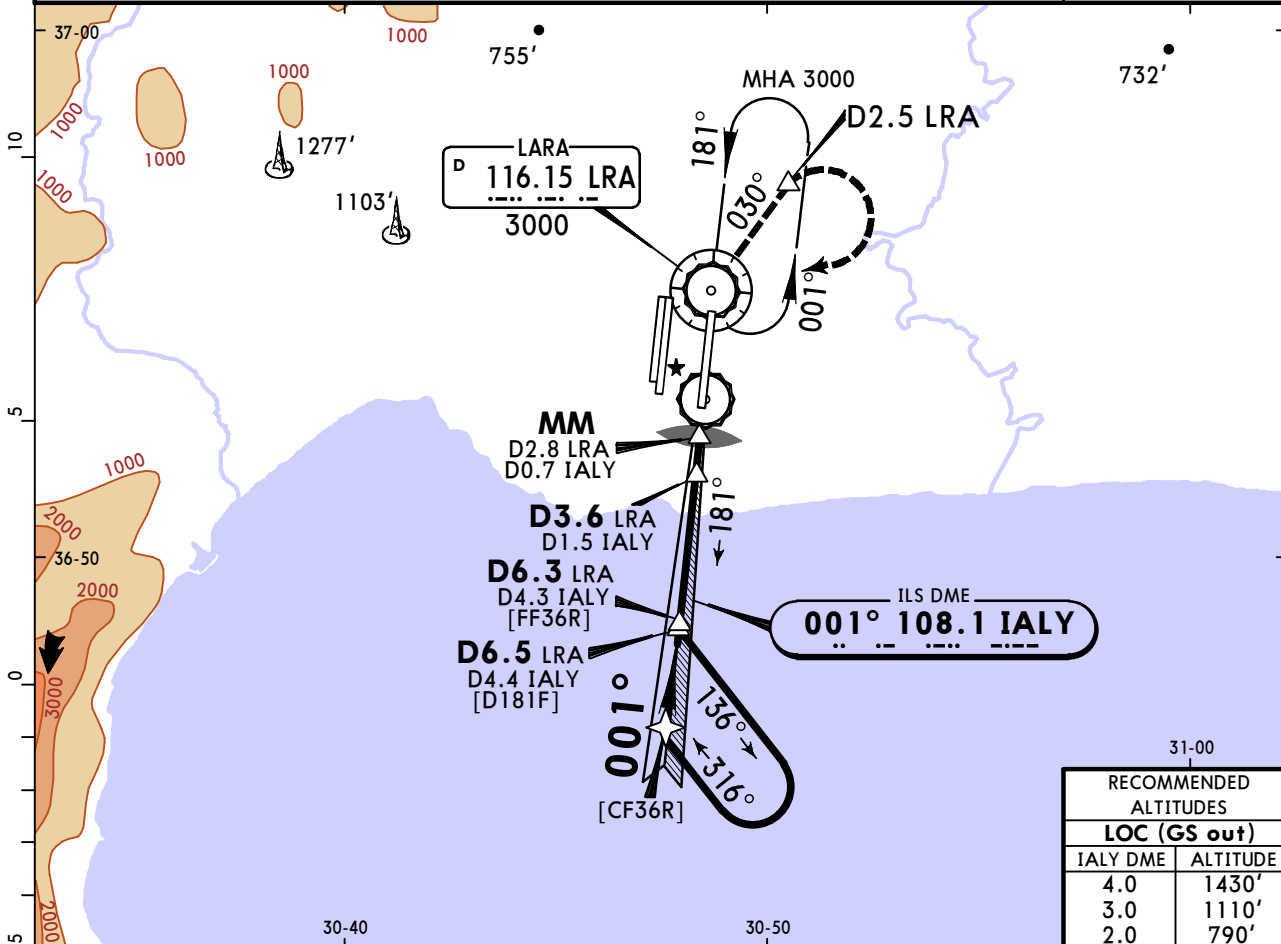
LTAI/AYT  
ANTALYA INTL

JEPPESEN  
9 MAY 25  
Eff 15 May 11-8

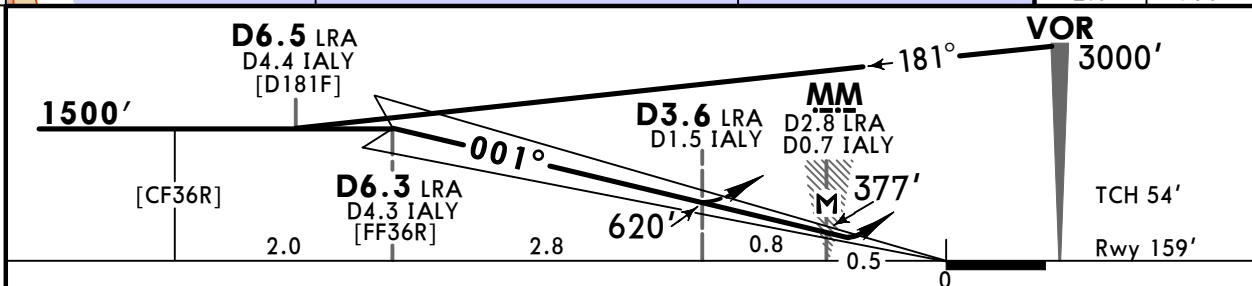
ANTALYA, TURKIYE  
ILS Z or LOC Z Rwy 36R


BRIEFING STRIP™

D-ATIS Arrival	ANTALYA Approach (R)			ANTALYA Tower			Ground		
118.275	119.025	124.350	124.425	119.8	120.125	126.1	119.85	121.7	121.9
LOC IALY 108.1	Final Apch Crs 001°	D6.3 LRA 1500' (1341')		ILS DA(H) 359' (200')		Apt Elev 177' Rwy 159'			
<b>MISSED APCH:</b> Climb on R-030 LRA until crossing 1600', then turn RIGHT (not before D2.5 LRA) climbing to 3000' proceed to VOR and hold. MAX 180 KT until inbound LRA VOR.									
Alt Set: hPa		Rwy Elev: 6 hPa		Trans level: By ATC		Trans alt: 15000'			
1. VOR required. 2. DME required.								MSA LRA VOR	



RECOMMENDED ALTITUDES	
LOC (GS out)	
IALY DME	ALTITUDE
4.0	1430'
3.0	1110'
2.0	790'



Gnd speed-Kts	70	90	100	120	140	160		180 KT MAX	1600' ↑	LRA on 116.15 R-030
GS 3.00°	372	478	531	637	743	849				
MAP at MM/D2.8 LRA/D0.7 IALY										

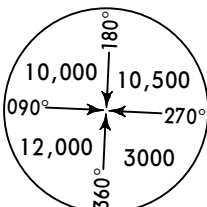
PANS OPS	STRAIGHT-IN LANDING				CIRCLE-TO-LAND	
	ILS		LOC (GS out)		CDFA	
	DA(H) <b>359'</b> (200')		DA(MDA(H) <b>620'</b> (461'))		ALS out	
	FULL	TDZ or CL out	ALS out		ALS out	Max Kts
	A	B	C	D		
	R550m	R550m	R1200m	R1500m	R1500m	100
					R2200m	135
						180
						205

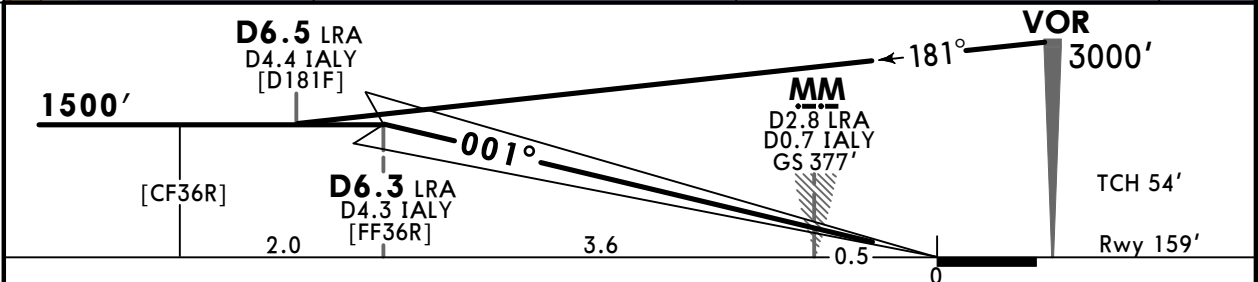
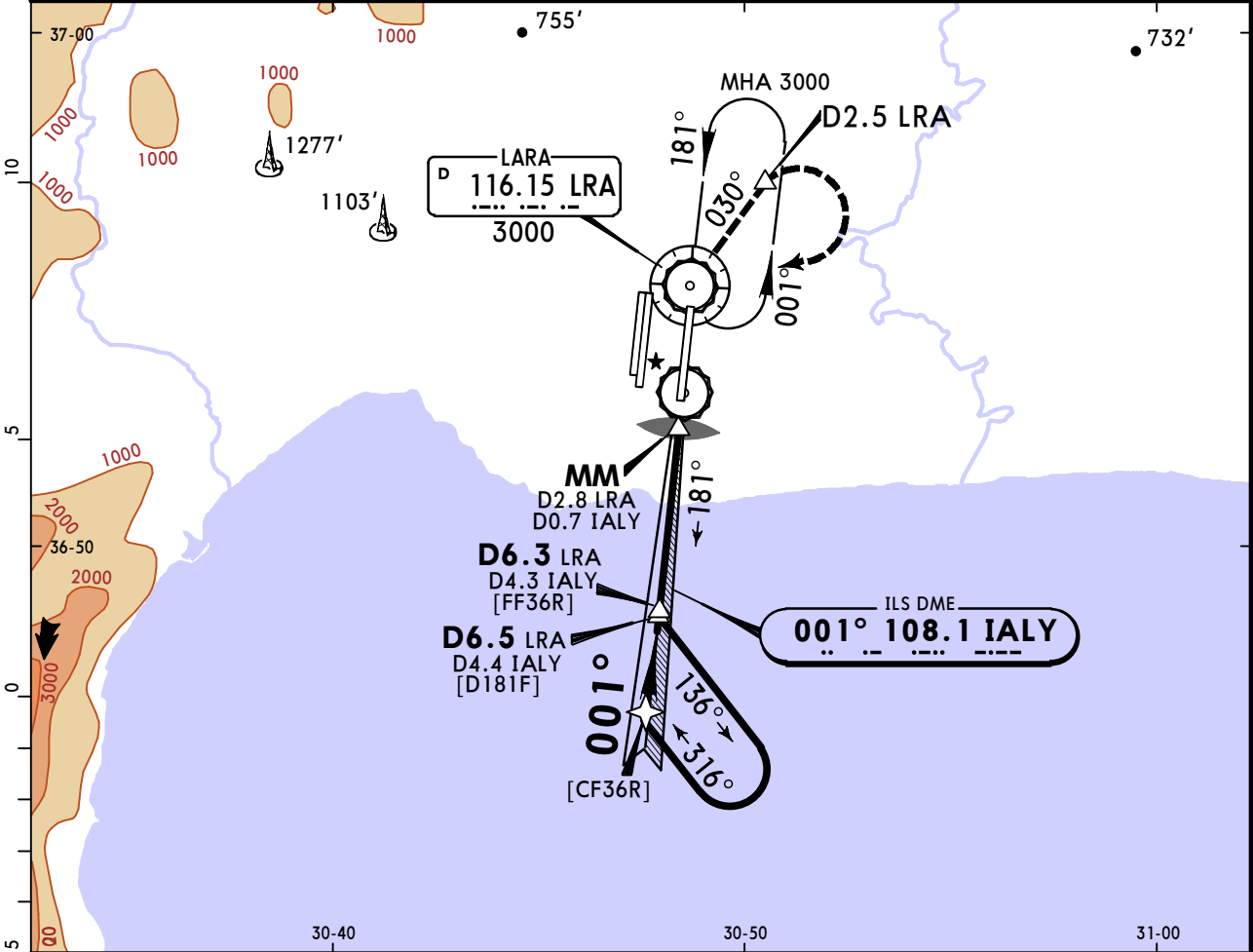
1 R750m when a Flight Director or Autopilot or HUD to DA is not used.  
2 VNAV DA(H) in lieu of MDA(H) depends on operator policy.

LTAI/AYT  
ANTALYA INTL

JEPPESEN  
9 MAY 25  
Eff 15 May 11-8A

ANTALYA, TURKIYE  
CAT II ILS Y Rwy 36R

D-ATIS Arrival	ANTALYA Approach (R)			ANTALYA Tower			Ground			
118.275	119.025	124.350	124.425	119.8	120.125	126.1	119.85	121.7	121.9	
LOC IALY 108.1	Final Apch Crs 001°	D6.3 LRA 1500' (1341')	CAT II ILS RA 100' DA(H) 259' (100')		Apt Elev 177'  Rwy 159'					
MISSED APCH: Climb on R-030 LRA until crossing 1600', then turn RIGHT (not before D2.5 LRA) climbing to 3000' proceed to VOR and hold. MAX 180 KT until inbound LRA VOR.										
Alt Set: hPa		Rwy Elev: 6 hPa		Trans level: By ATC		Trans alt: 15000'				
1. Special Aircrew & Acft Certification Required. 2. VOR required. 3. DME required.										



Gnd speed-Kts	70	90	100	120	140	160	ALSIF-II REIL PAPI	180 KT MAX	1600' on 116.15 R-030
GS	3.00°	372	478	531	637	743			

Std/State		STRAIGHT-IN LANDING	
		CAT II ILS RA 100' DA(H) 259' (100')	
		R300m	
PANS OPS		CAT D without autoland: R350m.	

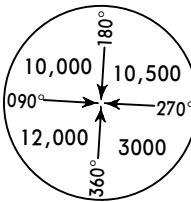
LTAI/AYT  
ANTALYA INTL

JEPPESEN  
9 MAY 25  
Eff 15 May 11-9

ANTALYA, TURKIYE  
ILS X or LOC X Rwy 36R

BRIEFING STRIP™

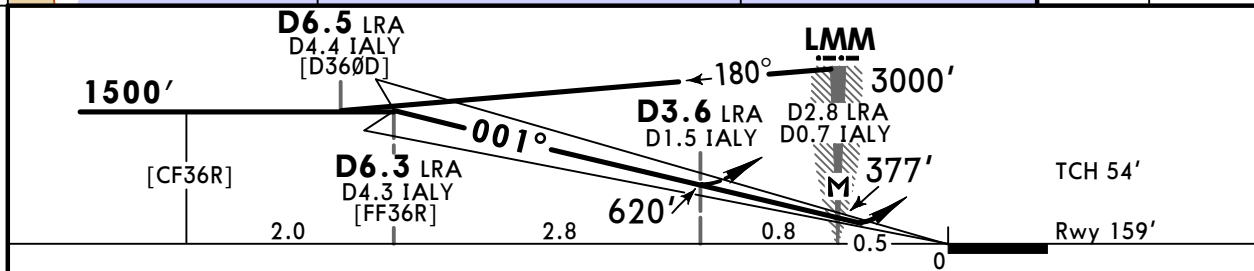
D-ATIS Arrival		ANTALYA Approach (R)		ANTALYA Tower		Ground	
118.275	119.025	124.350	124.425	119.8	120.125	126.1	119.85 121.7 121.9
LOC IALY 108.1	Final Apch Crs 001°	D6.3 LRA 1500' (1341')		ILS DA(H) 359' (200')		Apt Elev 177' Rwy 159'	
MISSED APCH: After passing 500' (LOC: 620') turn RIGHT and climb on RA 030° until crossing 1600', then turn RIGHT (not before D2.5 LRA) climbing to 3000' proceed to RA Lctr and hold. MAX 180 KT until inbound RA Lctr.							
Alt Set: hPa		Rwy Elev: 6 hPa		Trans level: By ATC		Trans alt: 15000'	
1. NDB required. 2. DME required.							




MSA RA Lctr



RECOMMENDED ALTITUDES	
LOC (GS out)	
IALY DME	ALTITUDE
4.0	1430'
3.0	1110'
2.0	790'



Gnd speed-Kts	70	90	100	120	140	160	<div>ALSIF-II</div> <div>REIL PAPI</div> 	Refer to Missed Apch above
GS 3.00°	372	478	531	637	743	849		
MAP at LMM/D2.8 LRA/D0.7 IALY								

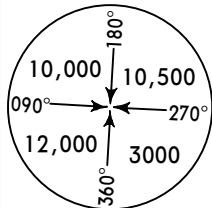
PANS OPS	STRAIGHT-IN LANDING				CIRCLE-TO-LAND	
	ILS			LOC (GS out)		
	DA(H) <b>359'</b> (200')			CDFA		
				2 DA/MDA(H) <b>620'</b> (461')		
	FULL	TDZ or CL out	ALS out	ALS out	Max Kts	MDA(H)
A					100	1100' (923') V1500m
B	R550m	1 R550m	R1200m	R1500m	135	1100' (923') V1600m
C					180	1100' (923') V2400m
D					205	1100' (923') V3600m

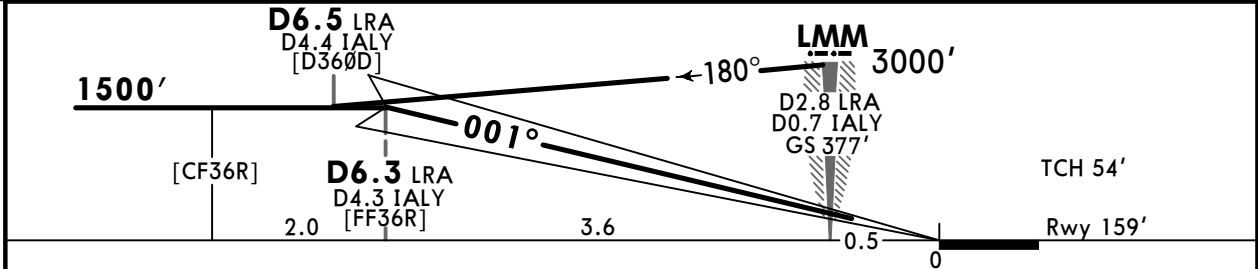
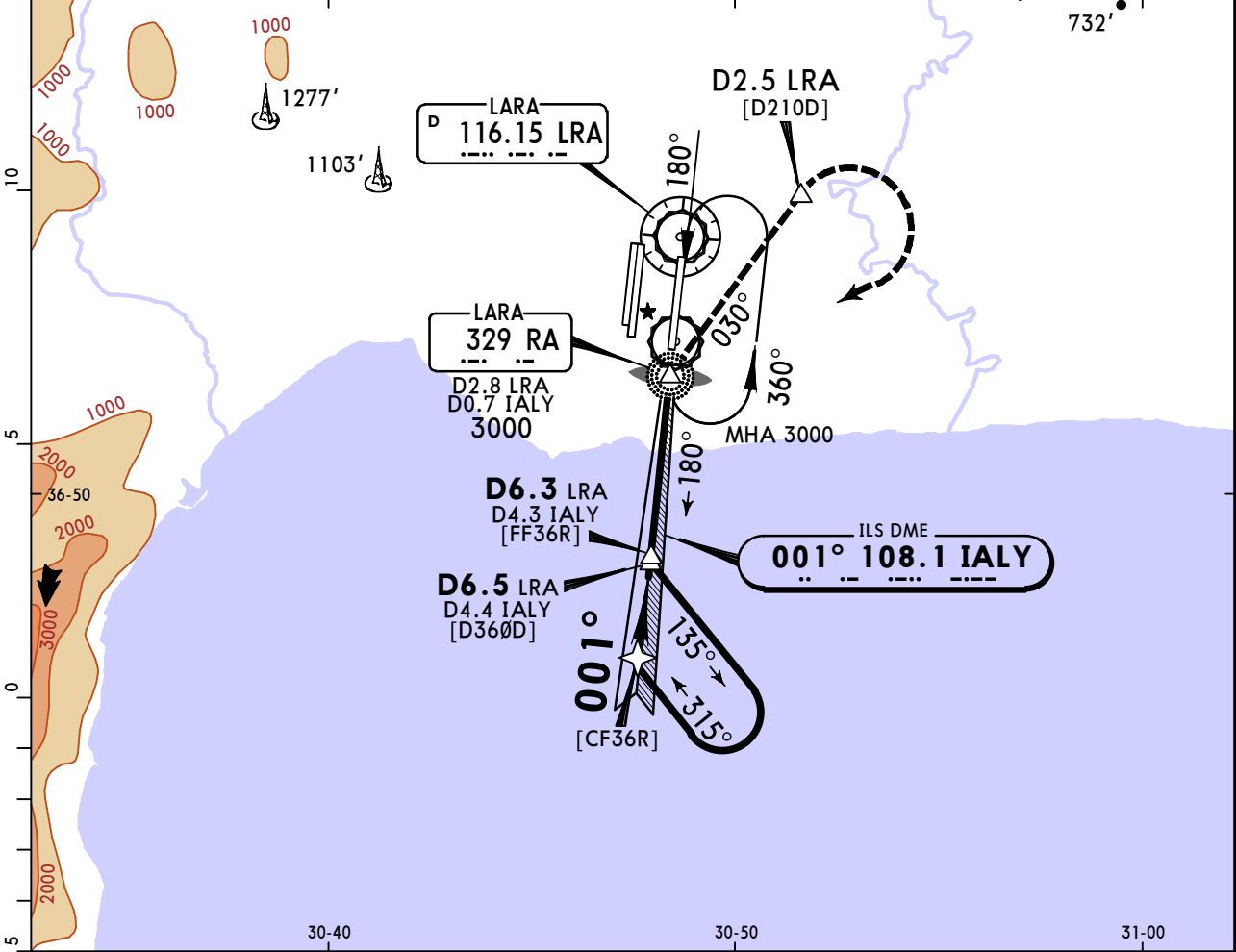
1 R750m when a Flight Director or Autopilot or HUD to DA is not used.  
2 VNAV DA(H) in lieu of MDA(H) depends on operator policy.

LTAI/AYT  
ANTALYA INTL

JEPPESSEN  
9 MAY 25  
Eff 15 May 11-9A

ANTALYA, TURKIYE  
CAT II ILS W Rwy 36R

D-ATIS Arrival	ANTALYA Approach (R)			ANTALYA Tower			Ground		
118.275	119.025	124.350	124.425	119.8	120.125	126.1	119.85	121.7	121.9
LOC IALY 108.1	Final Apch Crs 001°	D6.3 LRA 1500' (1341')	CAT II ILS RA 100' DA(H) 259' (100')		Apt Elev 177'  Rwy 159'				
MISSED APCH: After passing 500' turn RIGHT and climb on RA 030° until crossing 1600', then turn RIGHT (not before D2.5 LRA) climbing to 3000' proceed to RA Lctr and hold. MAX 180 KT until inbound RA Lctr.									
Alt Set: hPa		Rwy Elev: 6 hPa		Trans level: By ATC		Trans alt: 15000'			
1. Special Aircrew & Acft Certification Required. 2. NDB required. 3. DME required.									



Gnd speed-Kts	70	90	100	120	140	160	ALSIF-II REIL PAPI	180 KT	500'
GS	3.00°	372	478	531	637	743		MAX	↑

Std/State STRAIGHT-IN LANDING  
CAT II ILS  
RA 100'  
DA(H) 259' (100')

R300m  
CAT D without autoland: R350m.



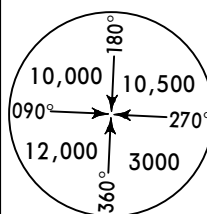
LTAI/AYT  
ANTALYA INTL

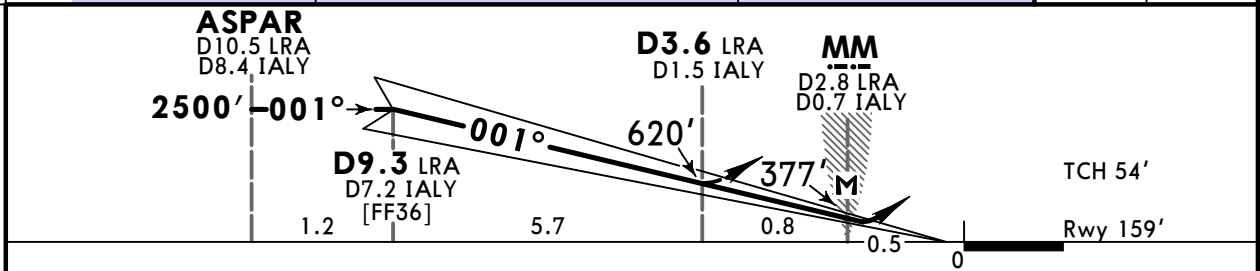
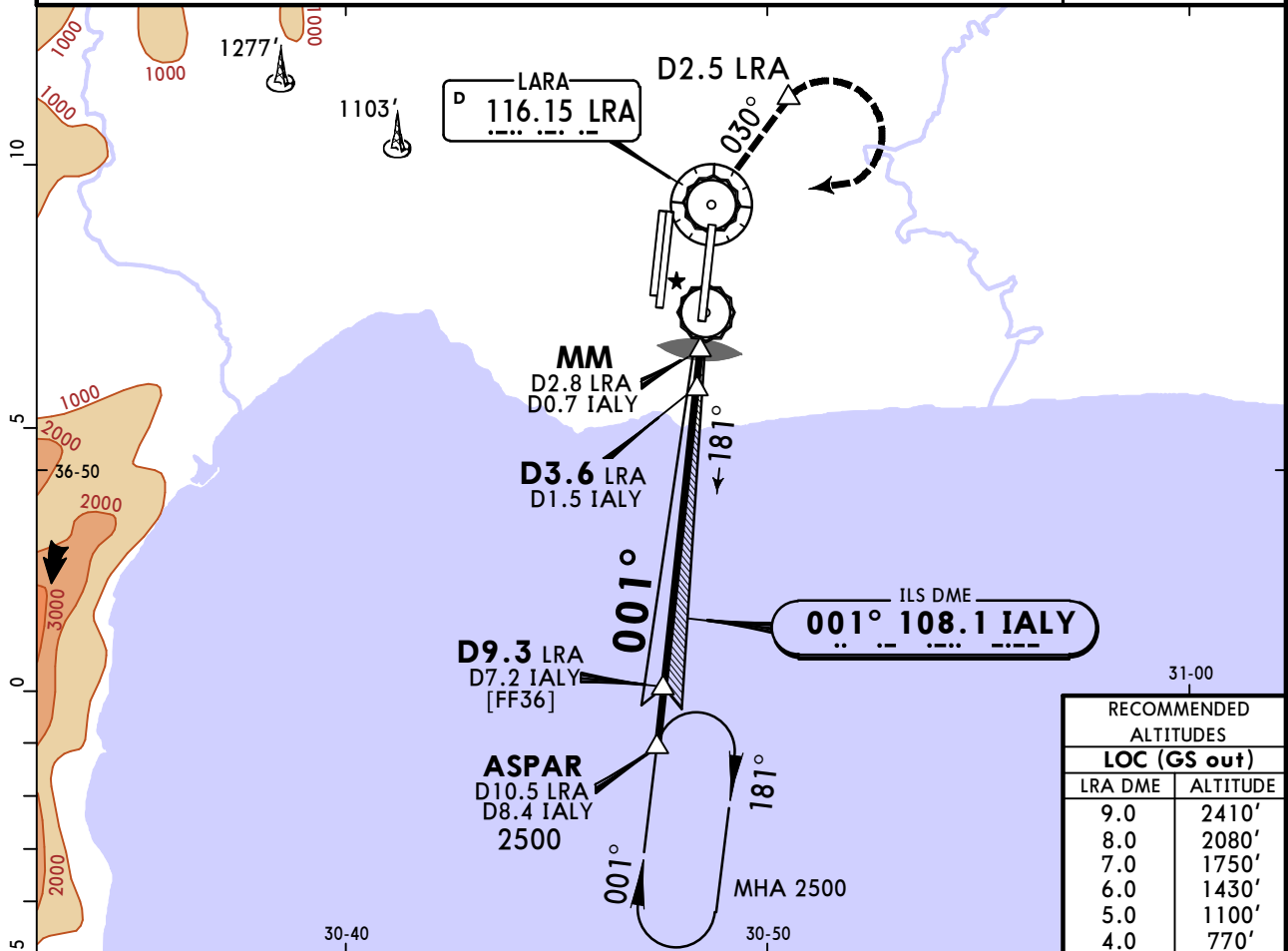
JEPPESEN  
9 MAY 25  
Eff 15 May 11-10


ANTALYA, TURKIYE  
ILS V or LOC V Rwy 36R

BRIEFING STRIP

TM

D-ATIS Arrival	ANTALYA Approach (R)			ANTALYA Tower			Ground		
118.275	119.025	124.350	124.425	119.8	120.125	126.1	119.85	121.7	121.9
LOC IALY 108.1	Final Apch Crs 001°	D9.3 LRA 2500' (2341')		ILS DA(H) 359' (200')		Apt Elev 177' Rwy 159'			
MISSED APCH: After passing 500' (LOC: 620') turn RIGHT and climb on R-030 LRA until crossing 1600', then turn RIGHT (not before D2.5 LRA) climbing to 2500' proceed to VOR then ASPAR and hold. MAX 180 KT until inbound LRA VOR.									
Alt Set: hPa		Rwy Elev: 6 hPa		Trans level: By ATC		Trans alt: 15000'			
1. VOR required. 2. DME required.									



Gnd speed-Kts	70	90	100	120	140	160		Refer to Missed Apch above	
Gs	3.00°	372	478	531	637	743			849
MAP at MM/D2.8 LRA/D0.7 IALY									

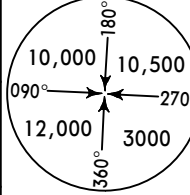
PANS OPS	Std/State			STRAIGHT-IN LANDING		LOC (GS out)		CIRCLE-TO-LAND	
	ILS			CDFA		DA/MDA(H)			
	DA(H) <b>359'</b> (200')			<b>2</b> DA/MDA(H) <b>620'</b> (461')					
	FULL	TDZ or CL out	ALS out	ALS out		Max Kts	MDA(H)		
	A	B	C	D					
		R550m	<b>1</b> R550m	R1200m	R1500m	R1500m	100	1100' (923')	V1500m
						R2200m	135	1100' (923')	V1600m
							180	1100' (923')	V2400m
							205	1100' (923')	V3600m

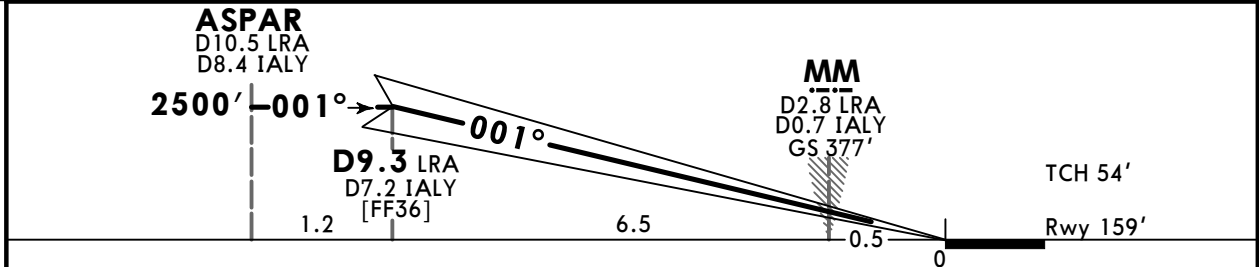
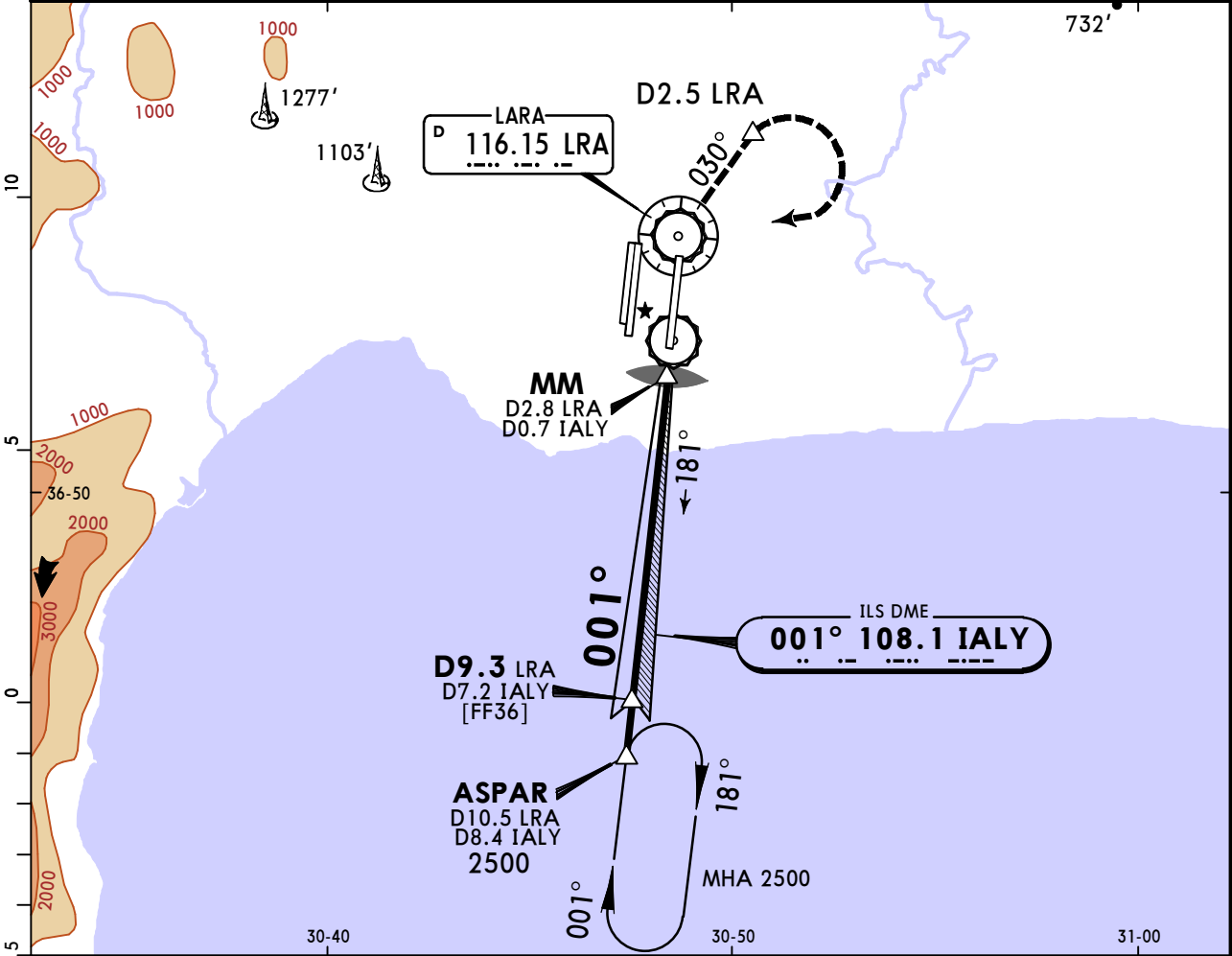
**1** R750m when a Flight Director or Autopilot or HUD to DA is not used.  
**2** VNAV DA(H) in lieu of MDA(H) depends on operator policy.

LTAI/AYT  
ANTALYA INTL

JEPPESSEN  
9 MAY 25  
Eff 15 May 11-10AA

ANTALYA, TURKIYE  
CAT II ILS T Rwy 36R

D-ATIS Arrival		ANTALYA Approach (R)			ANTALYA Tower			Ground		
118.275		119.025 124.350 124.425			119.8 120.125 126.1			119.85 121.7 121.9		
LOC IALY 108.1		Final Apch Crs 001°		D9.3 LRA 2500' (2341')		CAT II ILS RA 100' DA(H) 259' (100')		Apt Elev 177' Rwy 159'		
MISSED APCH: After passing 500' turn RIGHT and climb on R-030 LRA until crossing 1600', then turn RIGHT (not before D2.5 LRA) climbing to 2500' proceed to VOR then ASPAR and hold. MAX 180 KT until inbound LRA VOR.										
Alt Set: hPa		Rwy Elev: 6 hPa		Trans level: By ATC		Trans alt: 15000'				
1. Special Aircrew & Acft Certification Required. 2. VOR required. 3. DME required.										



Gnd speed-Kts	70	90	100	120	140	160		180 KT MAX	500' ↑
GS	3.00°	372	478	531	637	743			

Std/State STRAIGHT-IN LANDING  
CAT II ILS  
RA 100'  
DA(H) 259' (100')

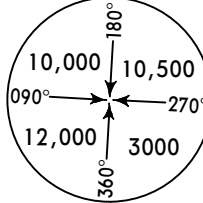
R300m

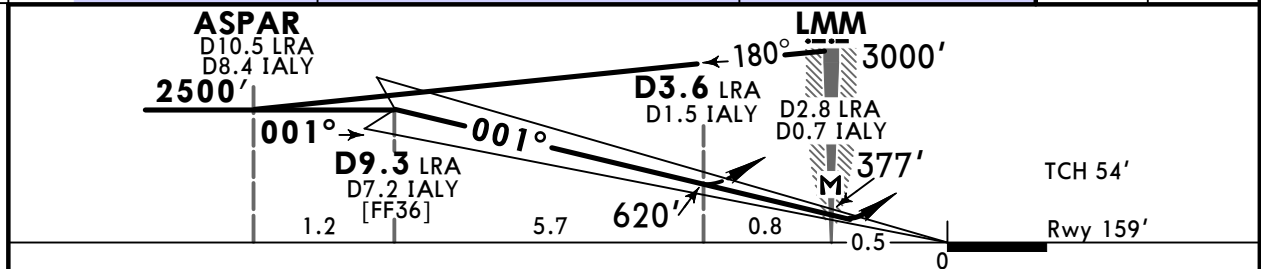
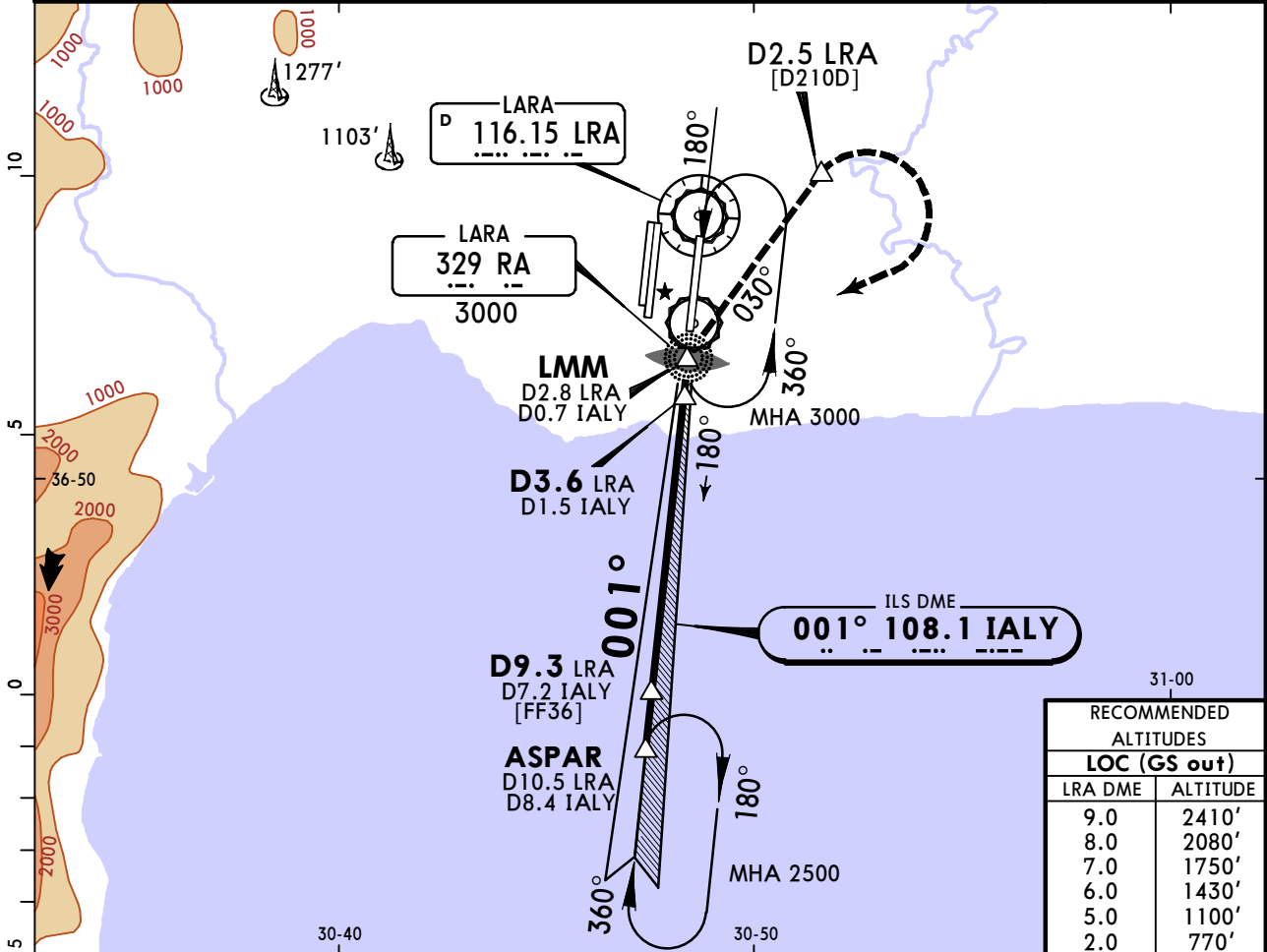
CAT D without autoland: R350m.

LTAI/AYT  
ANTALYA INTL

JEPPESSEN  
9 MAY 25  
Eff 15 May 11-11

ANTALYA, TURKIYE  
ILS S or LOC S Rwy 36R

D-ATIS Arrival		ANTALYA Approach (R)			ANTALYA Tower			Ground		
118.275		119.025 124.350 124.425			119.8 120.125 126.1			119.85 121.7 121.9		
LOC IALY 108.1		Final Apch Crs 001°		D9.3 LRA 2500' (2341')		ILS DA(H) 359' (200')		Apt Elev 177' Rwy 159'		
<b>MISSED APCH:</b> After passing 500' (LOC: 620') turn RIGHT and climb on RA 030° until crossing 1600', then turn RIGHT (not before D2.5 LRA) climbing to 2500' proceed to RA Lctr then ASPAR and hold. MAX 180 KT until inbound RA Lctr.										
Alt Set: hPa		Rwy Elev: 6 hPa		Trans level: By ATC		Trans alt: 15000'				
1. NDB required. 2. DME required.										



Gnd speed-Kts		70	90	100	120	140	160			Refer to Missed Apch above		
GS 3.00°		372	478	531	637	743	849					
MAP at LMM/D2.8 LRA/D0.7 IALY												
<b>Std/State</b>		STRAIGHT-IN LANDING					LOC (GS out)		CIRCLE-TO-LAND			
		ILS			CDFA							
		DA(H) <b>359'</b> (200')			<b>2</b> DA/MDA(H) <b>620'</b> (461')							
		FULL	TDZ or CL out	ALS out			ALS out	Max Kts	MDA(H)			
A	R550m	<b>1</b> R550m	R1200m	R1500m	R1500m		100	1100'	(923')	V1500m		
B					R2200m		135	1100'	(923')	V1600m		
C							180	1100'	(923')	V2400m		
D							205	1100'	(923')	V3600m		
<b>1</b> R750m when a Flight Director or Autopilot or HUD to DA is not used.												
<b>2</b> VNAV DA(H) in lieu of MDA(H) depends on operator policy.												

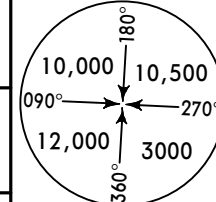
CHANGES: Bearings.

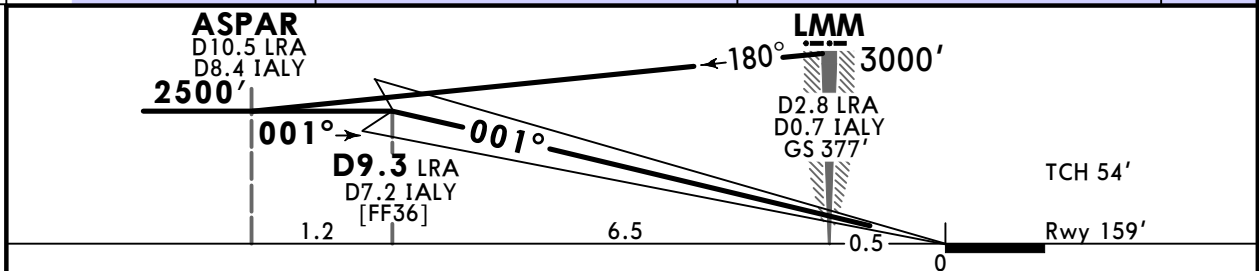
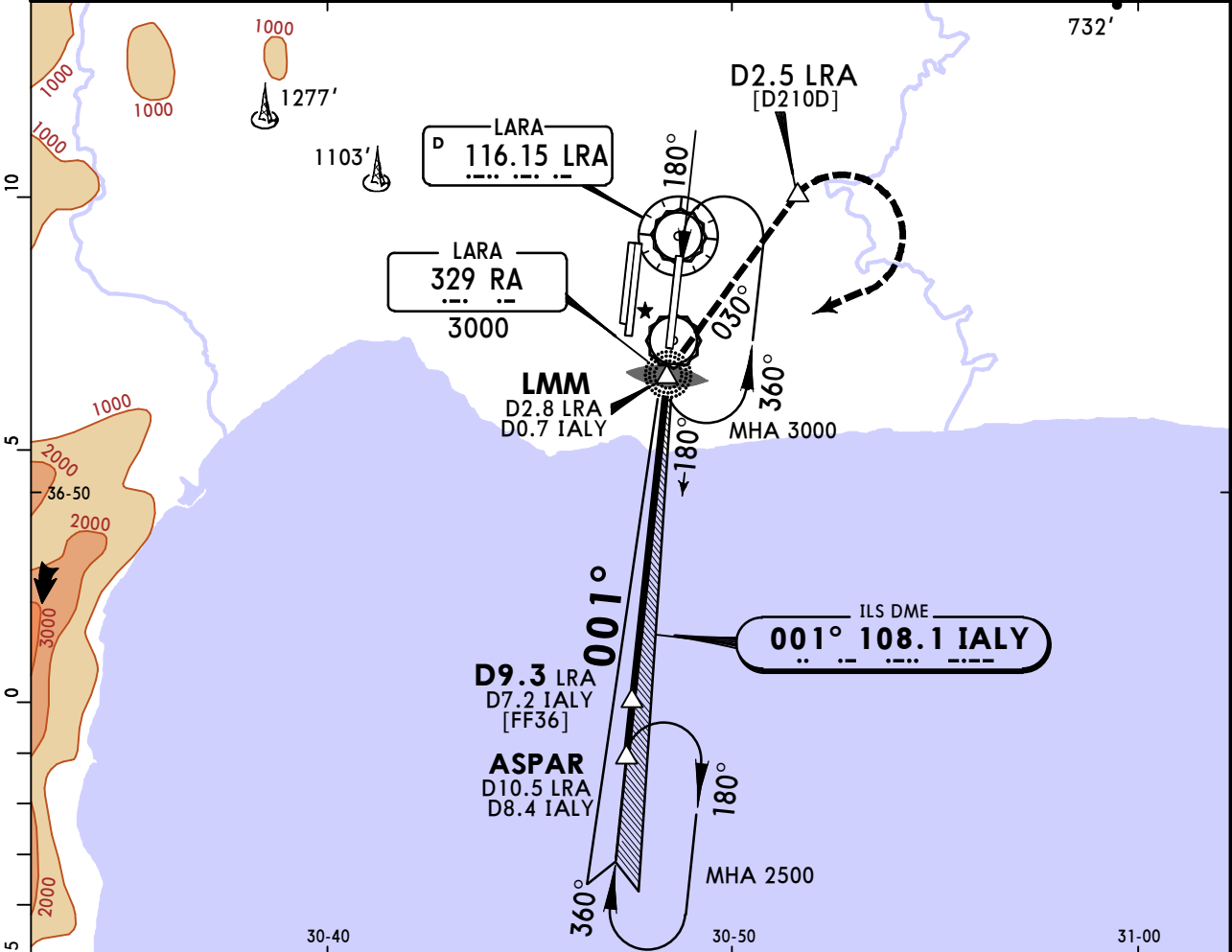
© JEPPESSEN, 2009, 2025. ALL RIGHTS RESERVED.

LTAI/AYT  
ANTALYA INTL

JEPPESSEN  
9 MAY 25  
Eff 15 May 11-11AA

ANTALYA, TURKIYE  
CAT II ILS R Rwy 36R

D-ATIS Arrival		ANTALYA Approach (R)				ANTALYA Tower				Ground			
118.275		119.025 124.350 124.425				119.8 120.125 126.1				119.85 121.7 121.9			
LOC IALY 108.1		Final Apch Crs 001°		D9.3 LRA 2500' (2341')		CAT II ILS RA 100' DA(H) 259' (100')		Apt Elev 177'  Rwy 159'					
MISSED APCH: After passing 500' turn RIGHT and climb on RA 030° until crossing 1600', then turn RIGHT (not before D2.5 LRA) climbing to 2500' proceed to RA Lctr then ASPAR and hold. MAX 180 KT until inbound RA Lctr.													
Alt Set: hPa		Rwy Elev: 6 hPa		Trans level: By ATC		Trans alt: 15000'							
1. Special Aircrew & Acft Certification Required. 2. NDB required. 3. DME required.													



Gnd speed-Kts	70	90	100	120	140	160	ALSIF-II REIL PAPI	180 KT	500'
GS	3.00°	372	478	531	637	743		MAX	↑

Std/State STRAIGHT-IN LANDING  
CAT II ILS  
RA 100'  
DA(H) 259' (100')

R300m  
CAT D without autoland: R350m.

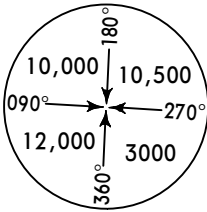


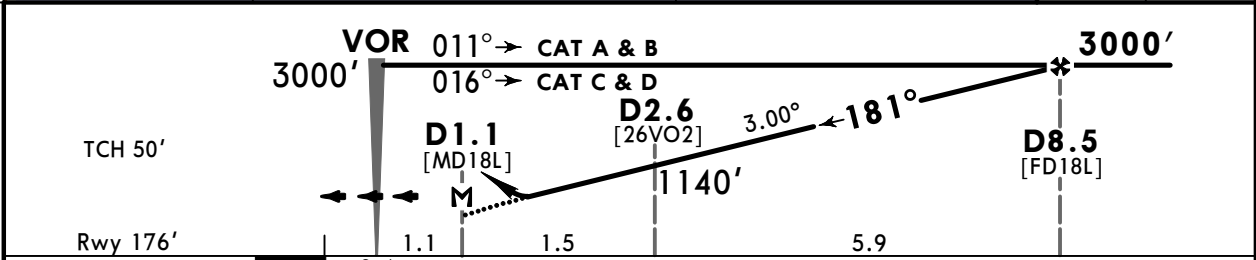
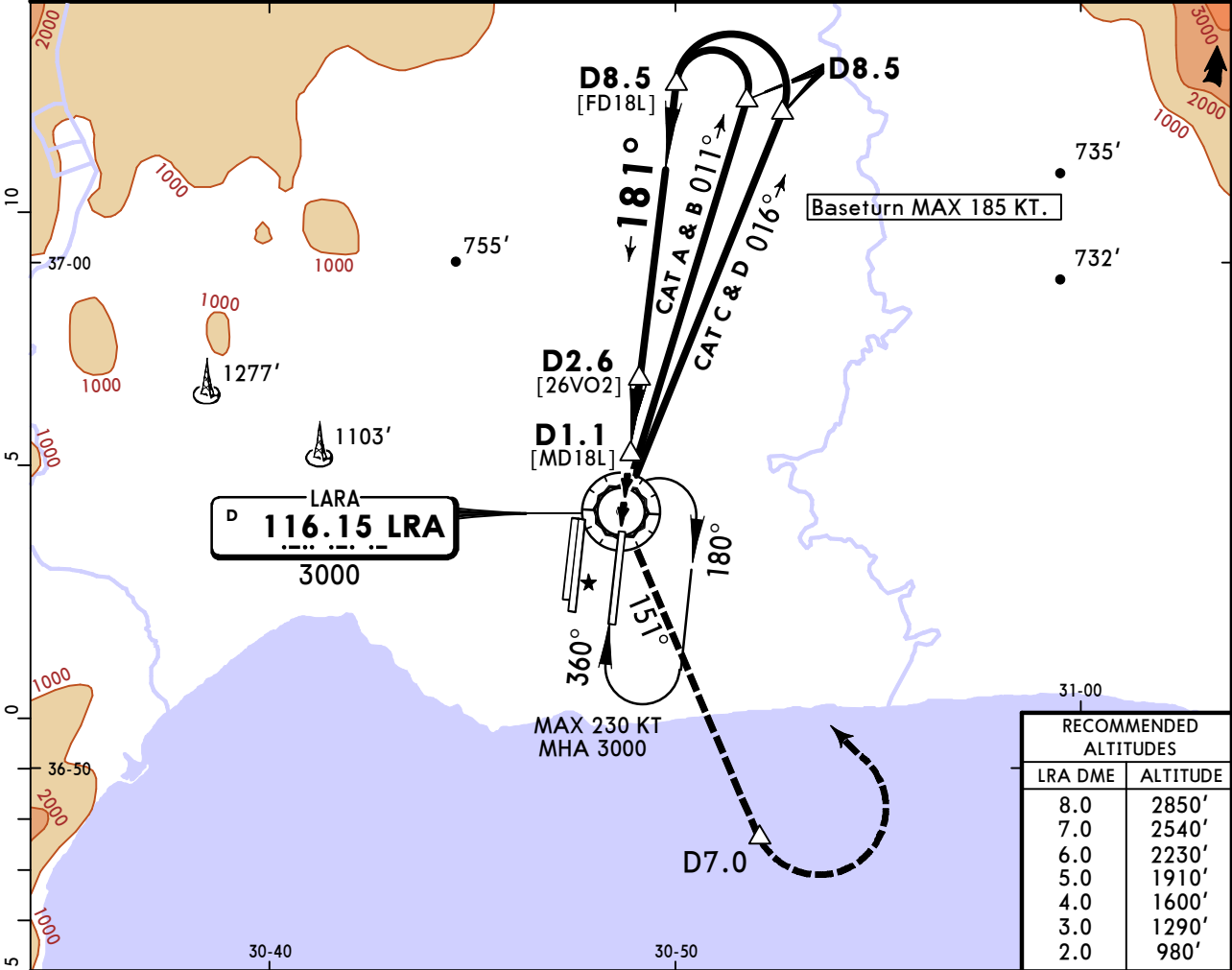



LTAI/AYT  
ANTALYA INTL

JEPPESEN  
9 MAY 25 (13-1) Eff 15 May

ANTALYA, TURKIYE  
VOR Z Rwy 18L

D-ATIS Arrival	ANTALYA Approach (R)				ANTALYA Tower			Ground		
118.275	119.025	124.350	124.425	119.8	120.125	126.1	119.85	121.7	121.9	
VOR LRA <b>116.15</b>	Final Apch Crs <b>181°</b>	<b>D8.5</b> <b>3000'</b> (2824')		DA/MDA(H) <b>680'</b> (504')		Apt Elev 177'  Rwy 176'				
<b>MISSED APCH:</b> Climb on R-151 to 2000', then turn LEFT (not before D7.0) climbing to 3000' to VOR and hold.										
Alt Set: hPa		Rwy Elev: 6 hPa		Trans level: By ATC		Trans alt: 15000'				
DME required.										
							MSA LRA VOR			



Gnd speed-Kts	70	90	100	120	140	160		2000' on 116.15 R-151
Descent Angle 3.00°	372	478	531	637	743	849		
MAP at D1.1								

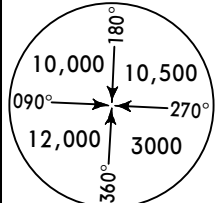
Std/State		STRAIGHT-IN LANDING		CIRCLE-TO-LAND	
		CDFA			
		DA/MDA(H) <b>680'</b> (504')			
		ALS out		Max Kts	MDA(H)
A	R1500m			100	1100' (923') V1500m
B				135	1100' (923') V1600m
C	R1600m	R2400m		180	1100' (923') V2400m
D				205	1100' (923') V3600m

VNAV DA(H) in lieu of MDA(H) depends on operator policy.

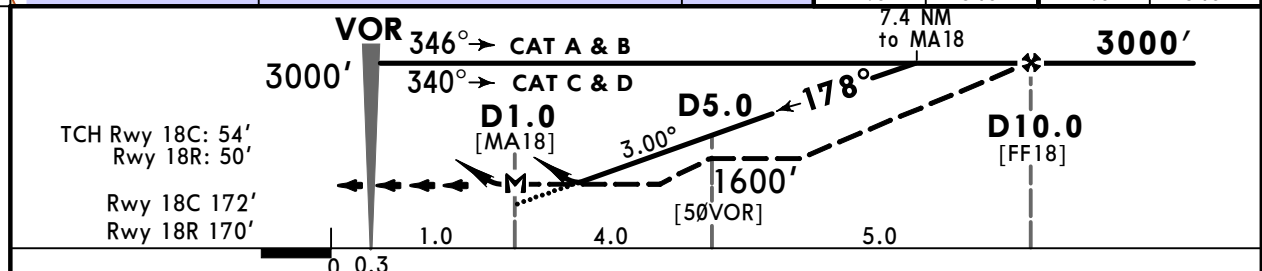
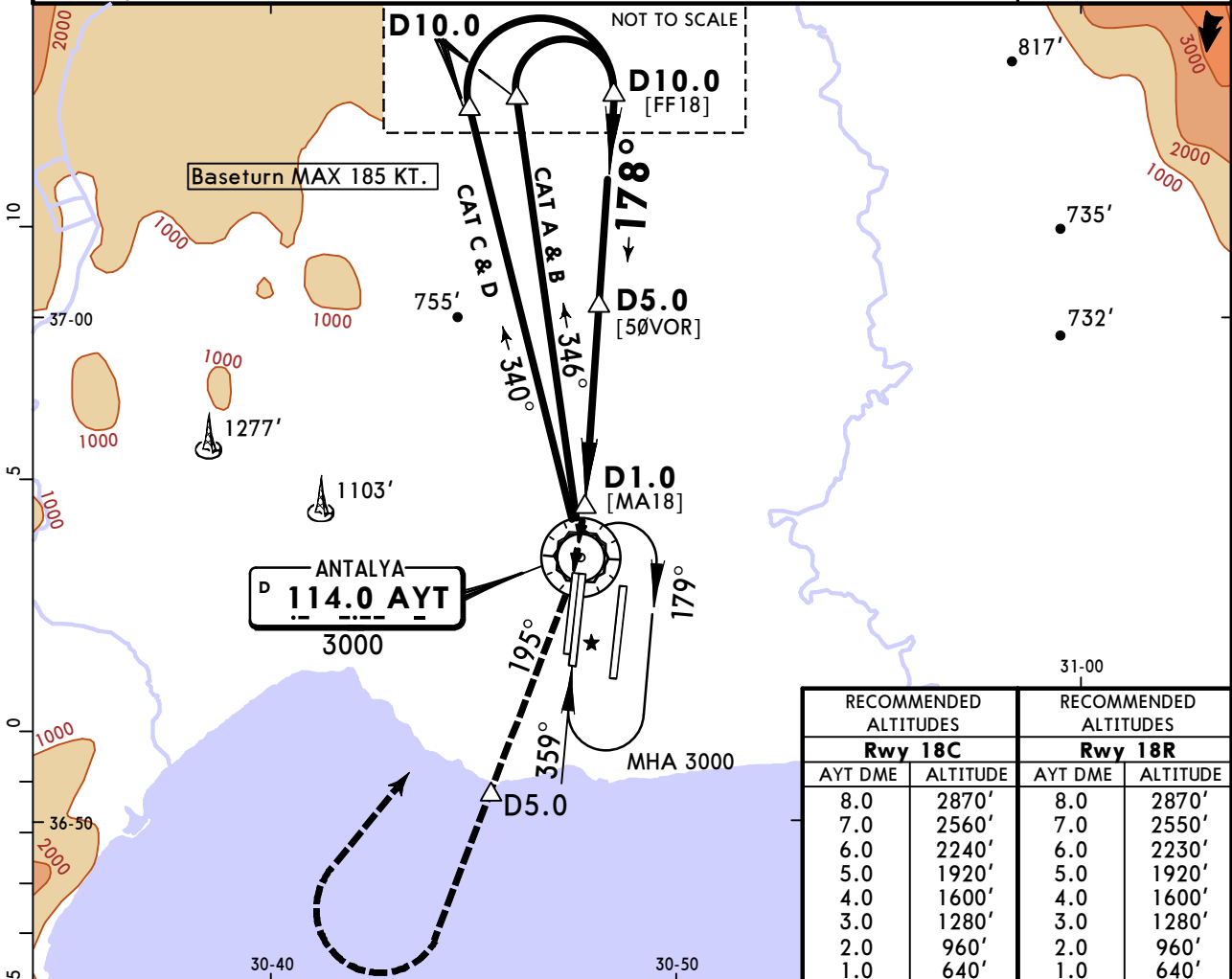
LTAI/AYT  
ANTALYA INTL

JEPPESEN  
9 MAY 25 **13-2** Eff 15 May

ANTALYA, TURKIYE  
VOR Z Rwy 18C/R

D-ATIS Arrival		ANTALYA Approach (R)			ANTALYA Tower			Ground		
118.275		119.025 124.350 124.425			119.8 120.125 126.1			119.85 121.7 121.9		
VOR AYT 114.0		Final Apch Crs 178°	D10.0 Rwy 18C 3000' (2828') Rwy 18R 3000' (2830')		DA/MDA(H) Refer to Minimums		Apt Elev 177' Rwy 18C 172' Rwy 18R 170'			
MISSED APCH: Climb on R-195 to 2000', then turn RIGHT (not before D5.0) climbing to 3000' to VOR and hold.										
Alt Set: hPa		Rwy Elev: 6 hPa		Trans level: By ATC		Trans alt: 15000'				
DME required.										

MSA AYT VOR



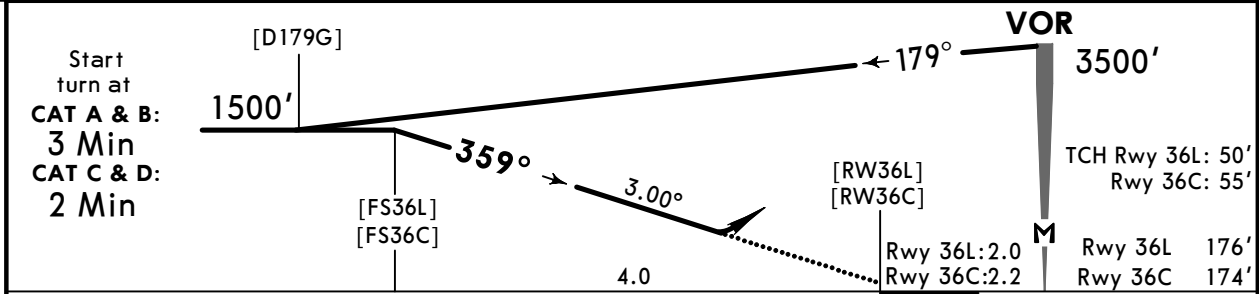
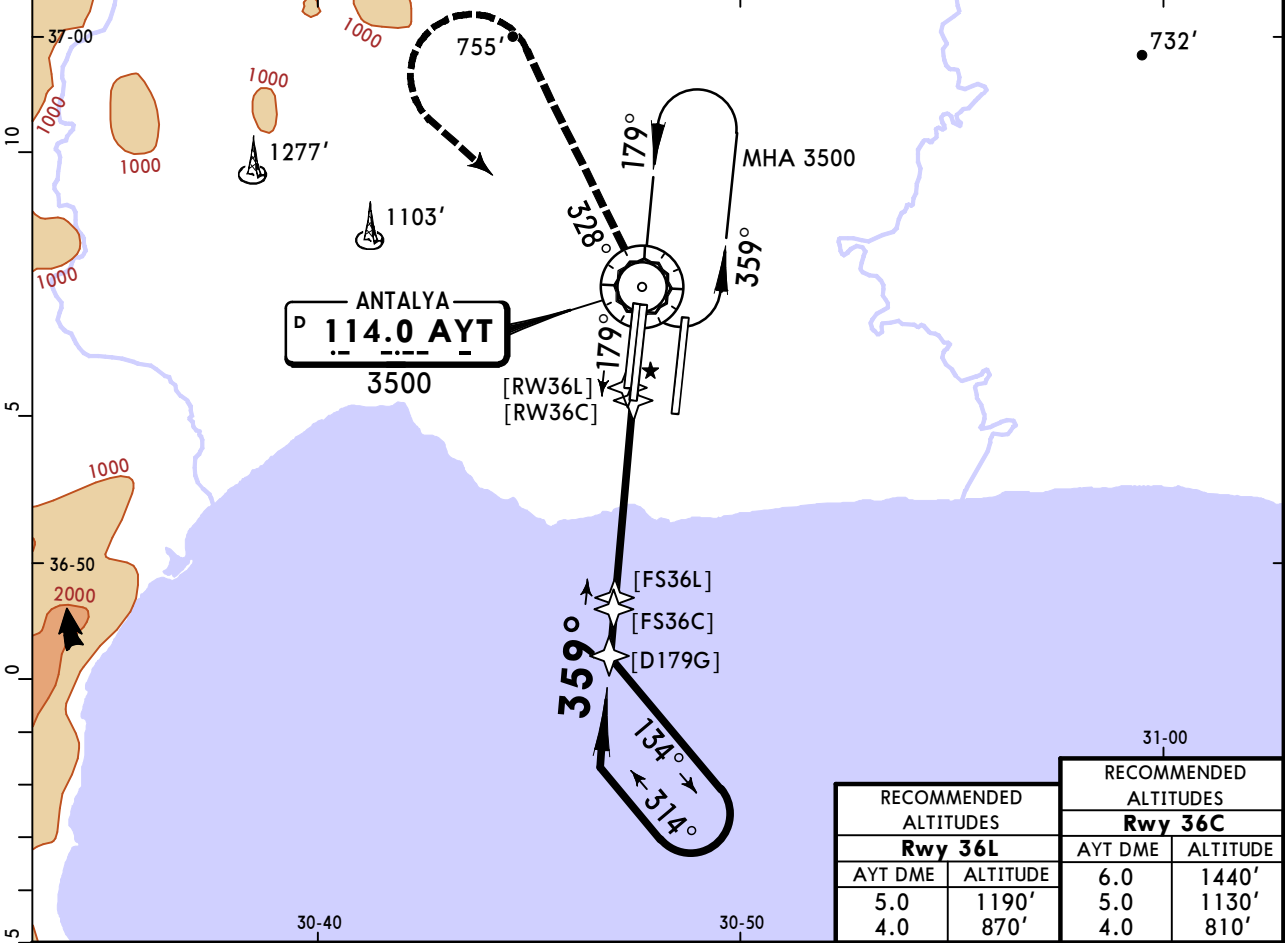
Std/State		STRAIGHT-IN LANDING				CIRCLE-TO-LAND	
		Rwy 18C		Rwy 18R			
		CDFA DA/MDA(H) <b>680'</b> (508')	non-CDFA MDA(H) <b>680'</b> (508')	CDFA DA/MDA(H) <b>680'</b> (510')	non-CDFA MDA(H) <b>680'</b> (510')		
		ALS out	ALS out	ALS out	ALS out	Max Kts	MDA(H)
A	R1500m	R1800m	R2600m	R1500m	R1800m	100	1100'(923') <b>2</b> V1500m
B						135	1100'(923') <b>2</b> V1600m
C	R1600m	R2400m	R2000m	R2800m	R1600m	180	1100'(923') <b>2</b> V2400m
D						205	1100'(923') V3600m
<b>1</b> VNAV DA(H) in lieu of MDA(H) depends on operator policy. <b>2</b> or higher straight-in minimums.							

LTAI/AYT  
ANTALYA INTL

JEPPESSEN  
9 MAY 25 **13-3** Eff 15 May

ANTALYA, TURKIYE  
VOR Z Rwy 36L/C

D-ATIS Arrival	ANTALYA Approach (R)			ANTALYA Tower			Ground		
118.275	119.025	124.350	124.425	119.8	120.125	126.1	119.85	121.7	121.9
VOR AYT <b>114.0</b>	Final Apch Crs <b>359°</b>	No FAF		DA/MDA(H) Refer to Minimums	Apt Elev 177' Rwy 36L 176' Rwy 36C 174'				
<b>MISSED APCH:</b> Turn <b>LEFT</b> climbing on R-328 to 1900', then turn <b>LEFT</b> climbing to 3500' proceed to VOR and hold. MAX 185 KT until inbound to AYT VOR.									
Alt Set: hPa		Rwy Elev: 6 hPa		Trans level: By ATC		Trans alt: 15000'		MSA AYT VOR	



Gnd speed-Kts	70	90	100	120	140	160	Rwy 36L HIALS	Rwy 36C HIALS	185 KT MAX	1900'	AYT on 114.0 R-328
Descent Angle	3.00°	372	478	531	637	743	REIL PAPI	REIL PAPI			
MAP at VOR											

Std/State		STRAIGHT-IN LANDING		CIRCLE-TO-LAND	
Rwy 36L CDFA 1 DA/MDA(H) <b>630'(454')</b>		Rwy 36C CDFA 1 DA/MDA(H) <b>630'(456')</b>			
		ALS out	ALS out	Max Kts	MDA(H)
A				100	1100'(923') V1500m
B	R1400m	R1500m	R1400m	135	1100'(923') V1600m
C				180	1100'(923') V2400m
D		R2100m	R2100m	205	1100'(923') V3600m

1 VNAV DA(H) in lieu of MDA(H) depends on operator policy.

CHANGES: Bearings.

© JEPPESSEN, 2001, 2025. ALL RIGHTS RESERVED.

LTAI/AYT  
ANTALYA INTL

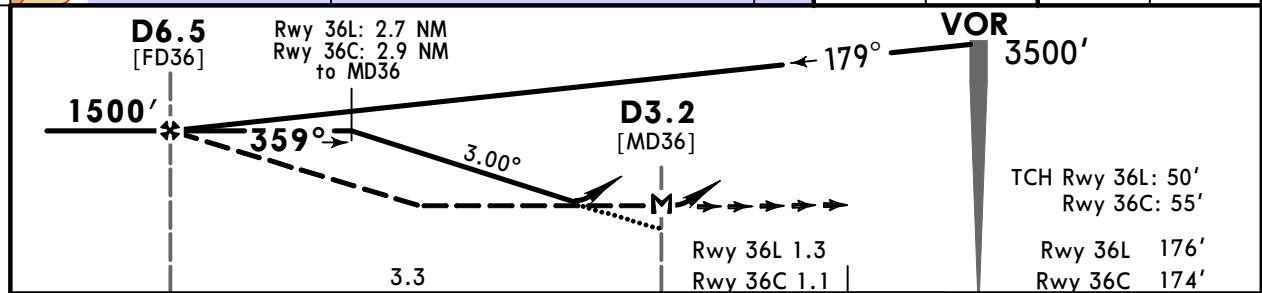
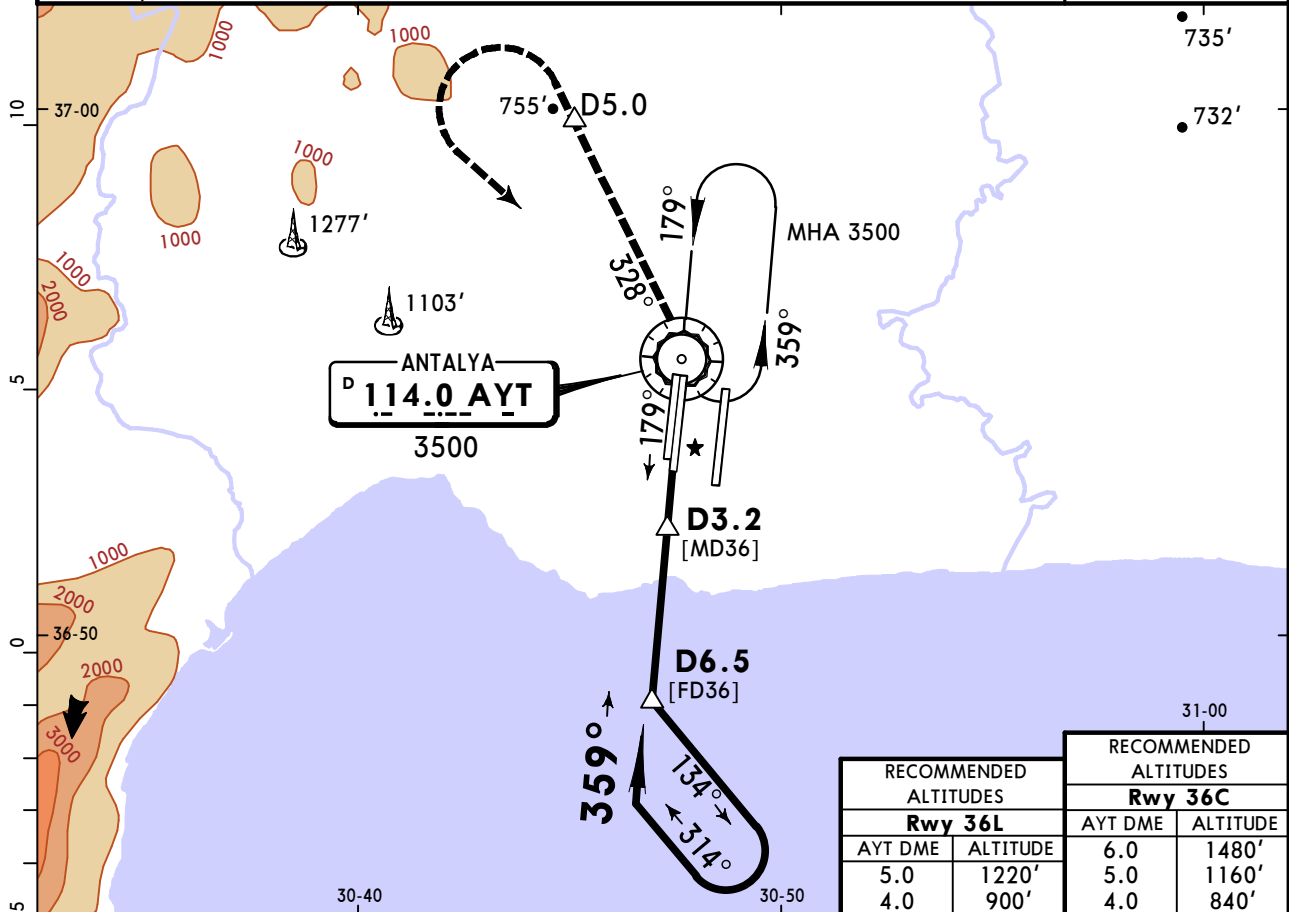
**JEPPESSEN**  
9 MAY 25 **13-4** Eff 15 May

ANTALYA, TURKIYE  
VOR Y Rwy 36L/C

BRIEFING STRIP™

D-ATIS Arrival		ANTALYA Approach (R)				ANTALYA Tower			Ground		
118.275		119.025 124.350 124.425				119.8 120.125 126.1			119.85 121.7 121.9		
VOR AYT 114.0	Final Apch Crs 359°	D6.5 Rwy 36L 1500' (1324') Rwy 36C 1500' (1326')				DA/MDA(H) Refer to Minimums		Apt Elev 177' Rwy 36L 176' Rwy 36C 174'			
MISSED APCH: Turn LEFT climbing on R-328 to 2200', then turn LEFT (not before D5.0) climbing to 3500' proceed to VOR and hold. MAX 185 KT until inbound to AYT VOR.											
Alt Set: hPa		Rwy Elev: 6 hPa		Trans level: By ATC			Trans alt: 15000'				
DME required.											

MSA AYT VOR



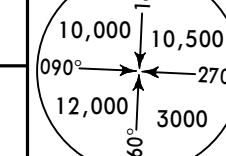
Gnd speed-Kts	70	90	100	120	140	160	Rwy 36L HIALS	Rwy 36C HIALS	185 KT MAX	2200' on 114.0 LT	AYT R-328
Descent Angle	3.00°	372	478	531	637	743	REIL PAPI	REIL PAPI			
MAP at D3.2											

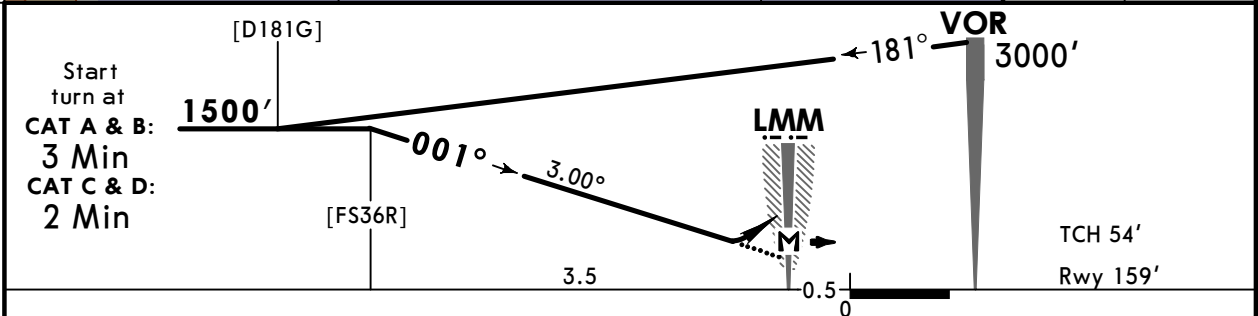
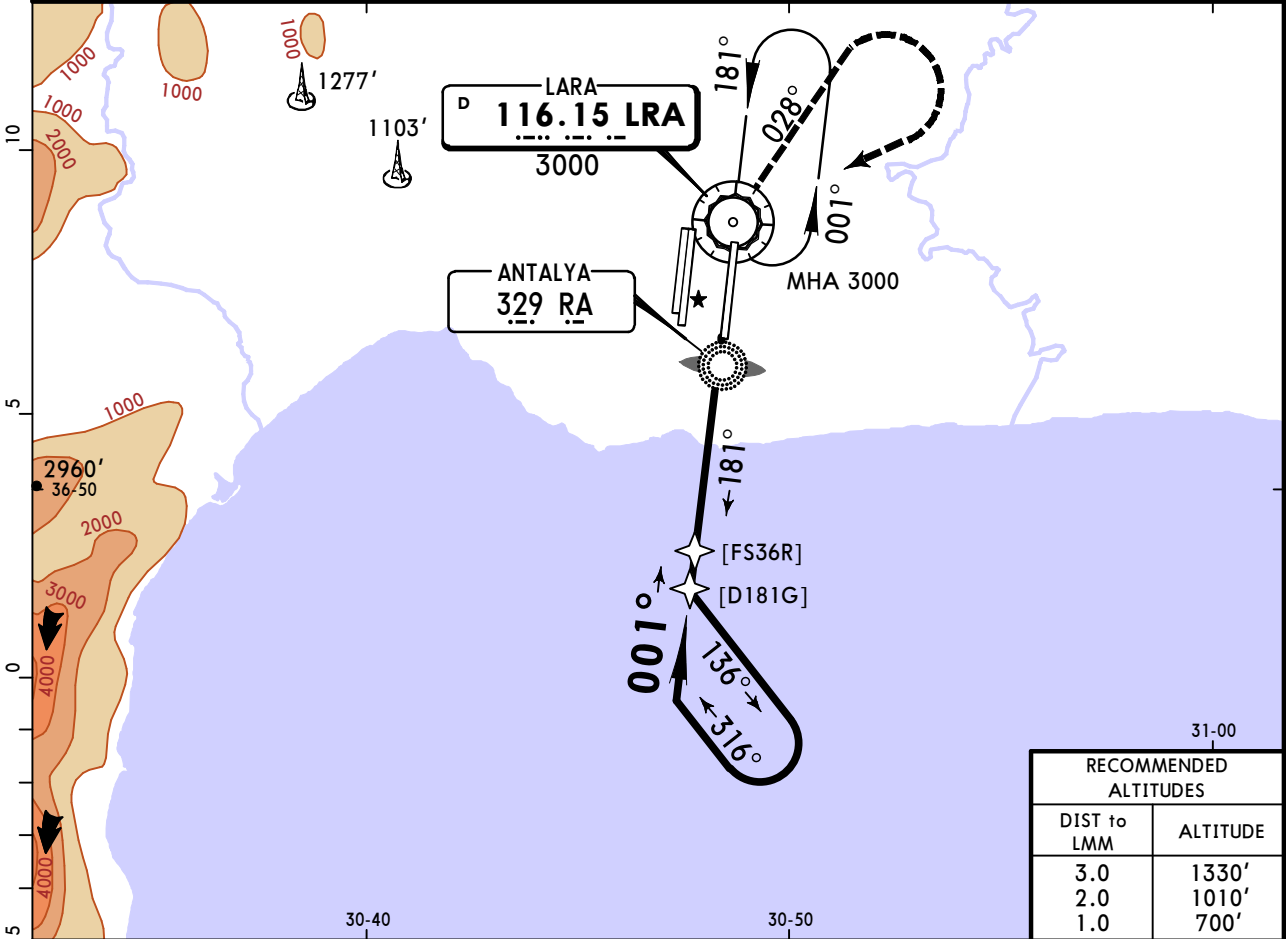
Std/State		STRAIGHT-IN LANDING								CIRCLE-TO-LAND		
Rwy 36L				Rwy 36C								
CDFA		non-CDFA		CDFA		non-CDFA						
1 DA/MDA(H)		MDA(H)		1 DA/MDA(H)		MDA(H)						
590'(414')		590'(414')		590'(416')		590'(416')						
ALS out		ALS out		ALS out		ALS out		Max Kts	MDA(H)			
A								100	1100'(923') 2 V1500m			
B	R1200m	R1900m	R1400m	R2100m	R1200m	R1900m	R1400m	R2100m	135	1100'(923') 2 V1600m		
C			R1600m	R2300m			R1600m	R2300m	180	1100'(923') V2400m		
D									205	1100'(923') V3600m		
1 VNAV DA(H) in lieu of MDA(H) depends on operator policy. 2 or higher straight-in minimums.												

LTAI/AYT  
ANTALYA INTL

JEPPESEN  
9 MAY 25 13-5 Eff 15 May

ANTALYA, TURKIYE  
VOR Z Rwy 36R

D-ATIS Arrival	ANTALYA Approach (R)			ANTALYA Tower			Ground		
118.275	119.025	124.350	124.425	119.8	120.125	126.1	119.85	121.7	121.9
VOR LRA <b>116.15</b>	Final Apch Crs <b>001°</b>	[FS36R] <b>1500'</b> (1341')	DA/MDA(H) <b>620'</b> (461')	Apt Elev 177'	Rwy 159'				
<b>MISSED APCH: Climb on R-028 to 1800', then turn RIGHT climbing to 3000' to VOR and hold.</b>									
Alt Set: hPa	Rwy Elev: 6 hPa	Trans level: By ATC		Trans alt: 15000'		MSA LRA VOR			



Gnd speed-Kts	70	90	100	120	140	160		1800' on 116.15 R-028
Descent Angle 3.00°	372	478	531	637	743	849		
MAP at LMM								

Std/State		STRAIGHT-IN LANDING		CIRCLE-TO-LAND	
		CDFA			
		DA/MDA(H) <b>620'</b> (461')			
		ALS out		Max Kts	MDA(H)
A	R1500m	R2200m		100	1100' (923') V1500m
B				135	1100' (923') V1600m
C				180	1100' (923') V2400m
D				205	1100' (923') V3600m

VNAV DA(H) in lieu of MDA(H) depends on operator policy.

CHANGES: Bearings.

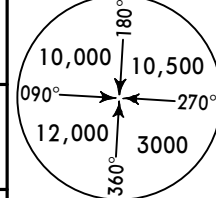
© JEPPESEN, 2005, 2025. ALL RIGHTS RESERVED.

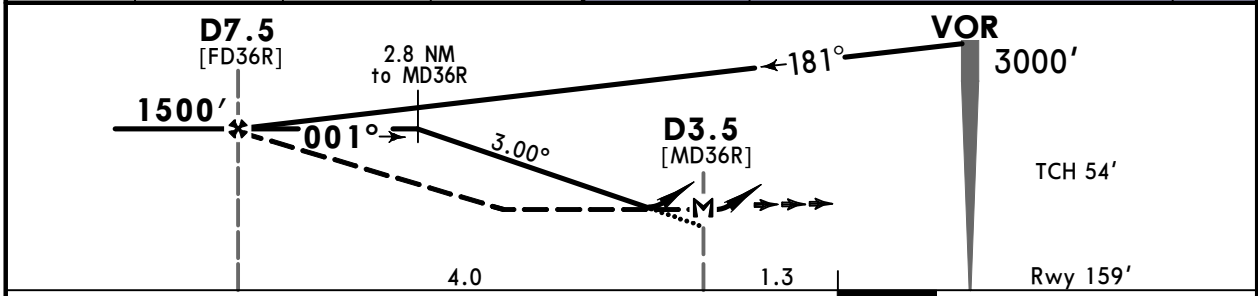
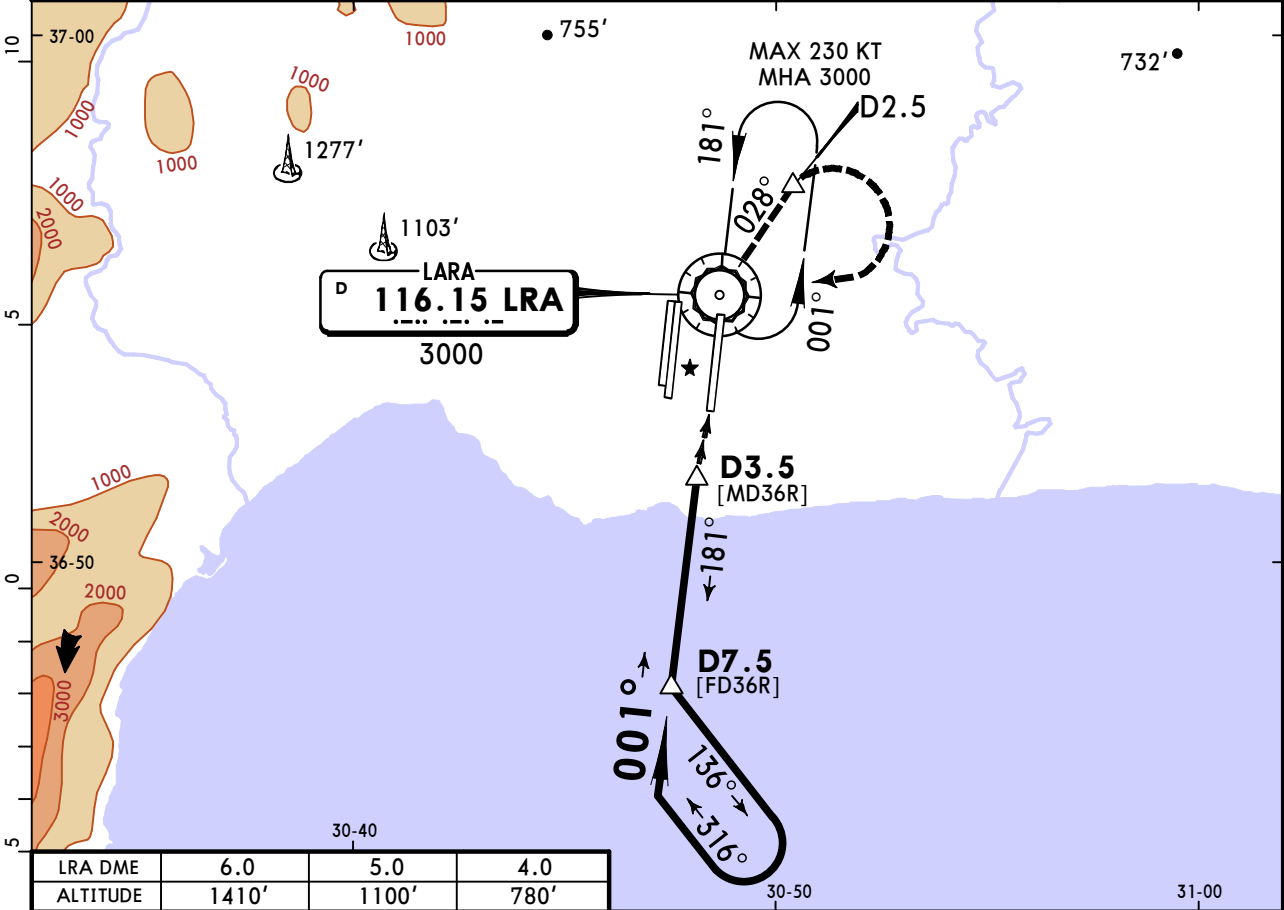


LTAI/AYT  
ANTALYA INTL

**JEPPESSEN**  
9 MAY 25 **13-6** Eff 15 May

**ANTALYA, TURKIYE**  
**VOR Y Rwy 36R**

D-ATIS Arrival	ANTALYA Approach (R)			ANTALYA Tower			Ground			
118.275	119.025	124.350	124.425	119.8	120.125	126.1	119.85	121.7	121.9	
VOR LRA <b>116.15</b>	Final Apch Crs <b>001°</b>	<b>D7.5</b> <b>1500'</b> (1341')	DA/MDA(H) <b>590'</b> (431')		Apt Elev 177'  Rwy 159'		  MSA LRA VOR			
<b>MISSED APCH:</b> Climb on R-028 to 1800', then turn RIGHT (not before D2.5) climbing to 3000' to VOR and hold.										
Alt Set: hPa		Rwy Elev: 6 hPa		Trans level: By ATC		Trans alt: 15000'				
DME required.										



Gnd speed-Kts	70	90	100	120	140	160		<b>1800'</b> on <b>116.15</b> <b>R-028</b>
Descent Angle 3.00°	372	478	531	637	743	849		
MAP at D3.5								

Std/State		STRAIGHT-IN LANDING				CIRCLE-TO-LAND	
		CDFA		non-CDFA			
		<b>1</b> DA/MDA(H) <b>590'</b> (431')		MDA(H) <b>590'</b> (431')			
		ALS out		ALS out		Max Kts	MDA(H)
A	R1300m	R2000m	R1500m	R2200m	100	<b>1100'</b> (923')	<b>2</b> V1500m
B					135	<b>1100'</b> (923')	<b>2</b> V1600m
C			R1700m	R2400m	180	<b>1100'</b> (923')	V2400m
D					205	<b>1100'</b> (923')	V3600m
<b>1</b> VNAV DA(H) in lieu of MDA(H) depends on operator policy. <b>2</b> or higher straight-in minimums.							

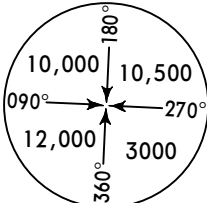
CHANGES: Bearings.

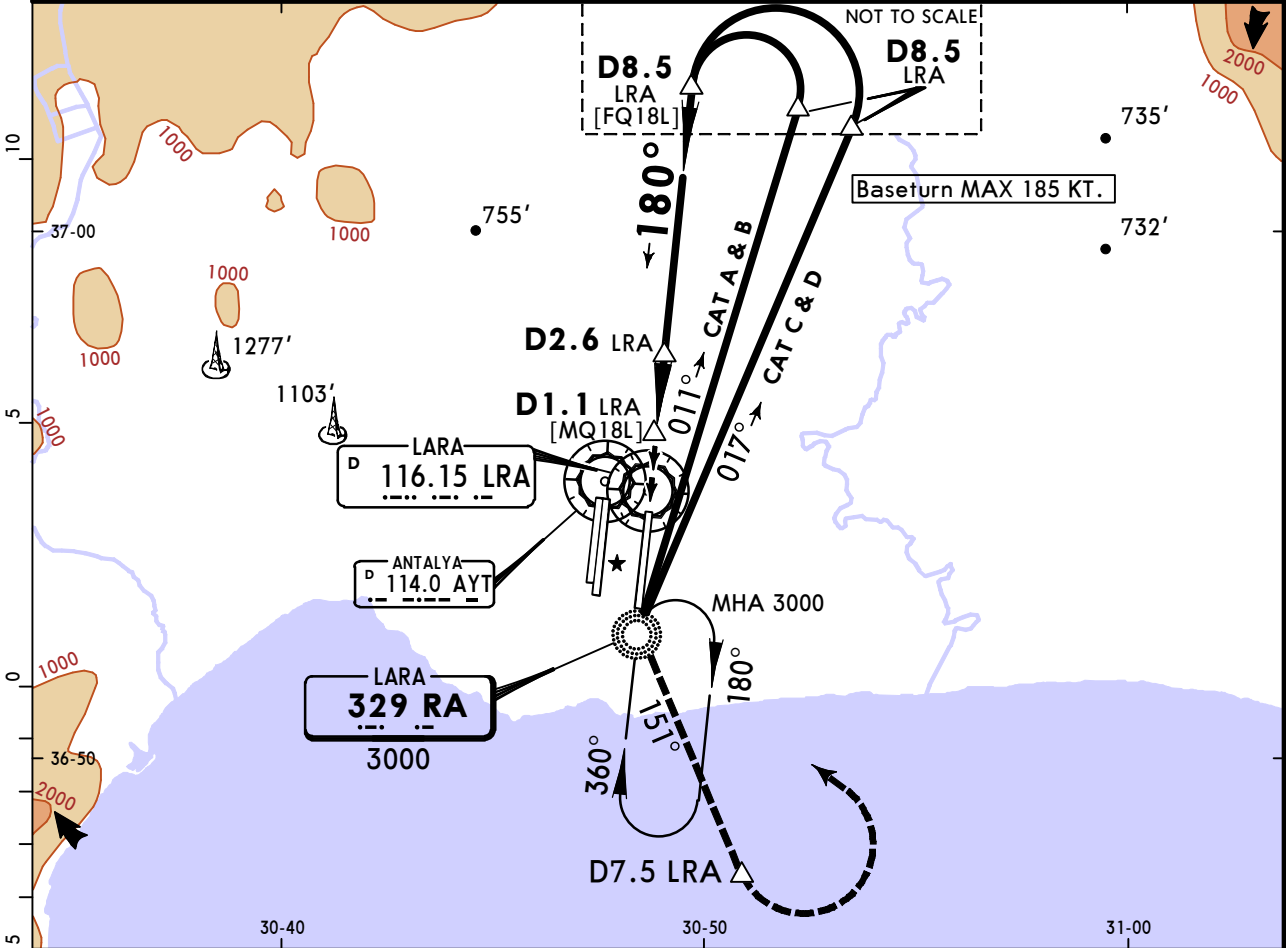
© JEPPESSEN, 2005, 2025. ALL RIGHTS RESERVED.

LTAI/AYT  
ANTALYA INTL

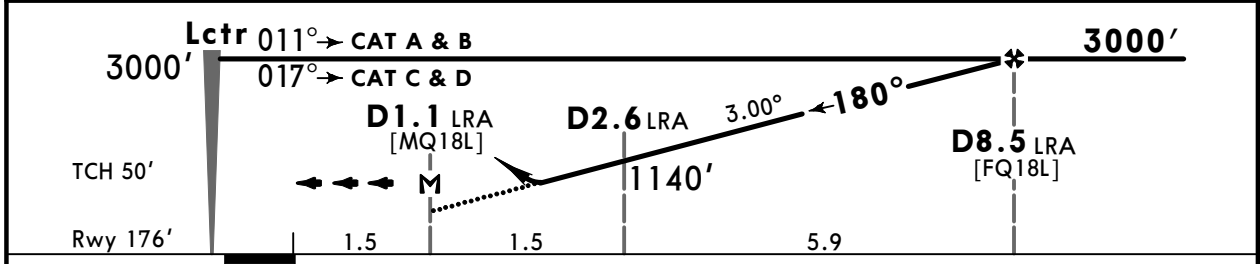
JEPPESEN  
9 MAY 25 (16-1) Eff 15 May

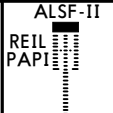
ANTALYA, TURKIYE  
NDB Z Rwy 18L

D-ATIS Arrival	ANTALYA Approach (R)			ANTALYA Tower			Ground		
118.275	119.025	124.350	124.425	119.8	120.125	126.1	119.85	121.7	121.9
Lctr RA <b>329</b>	Final Apch Crs <b>180°</b>	<b>D8.5 LRA</b> <b>3000'</b> (2824')		DA/MDA(H) <b>680'</b> (504')		Apt Elev 177'  Rwy 176'			
<b>MISSED APCH:</b> Climb on 151° from Lctr to 2000', then turn LEFT (not before D7.5 LRA) climbing to 3000' to Lctr and hold.									
Alt Set: hPa		Rwy Elev: 6 hPa		Trans level: By ATC		Trans alt: 15000'			
DME required.									



LRA DME	2.0	3.0	4.0	5.0	6.0	7.0	8.0
ALTITUDE	980'	1290'	1600'	1910'	2230'	2540'	2850'



Gnd speed-Kts	70	90	100	120	140	160		2000' on 151° from RA 329
Descent Angle 3.00°	372	478	531	637	743	849		
MAP at D1.1 LRA								

Std/State		STRAIGHT-IN LANDING		CIRCLE-TO-LAND	
		CDFA			
		DA/MDA(H) <b>680'</b> (504')			
		ALS out		Max Kts	MDA(H)
A	R1500m			100	1100' (923') V1500m
B				135	1100' (923') V1600m
C	R1600m	R2400m		180	1100' (923') V2400m
D				205	1100' (923') V3600m

VNAV DA(H) in lieu of MDA(H) depends on operator policy.

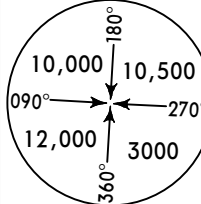
CHANGES: Bearings.

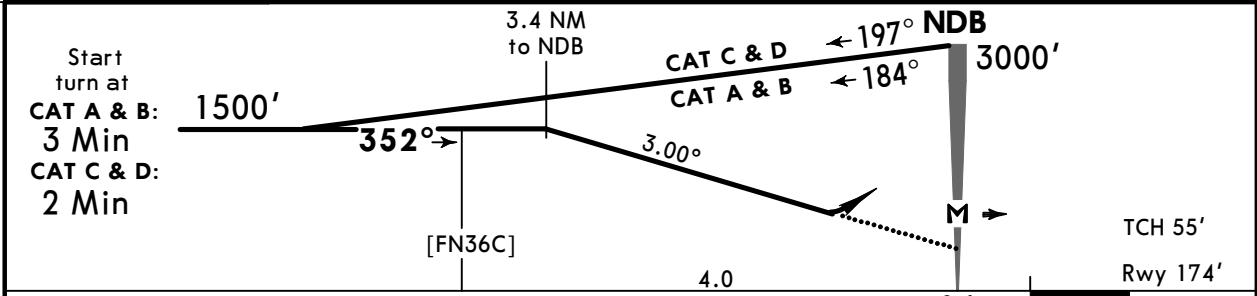
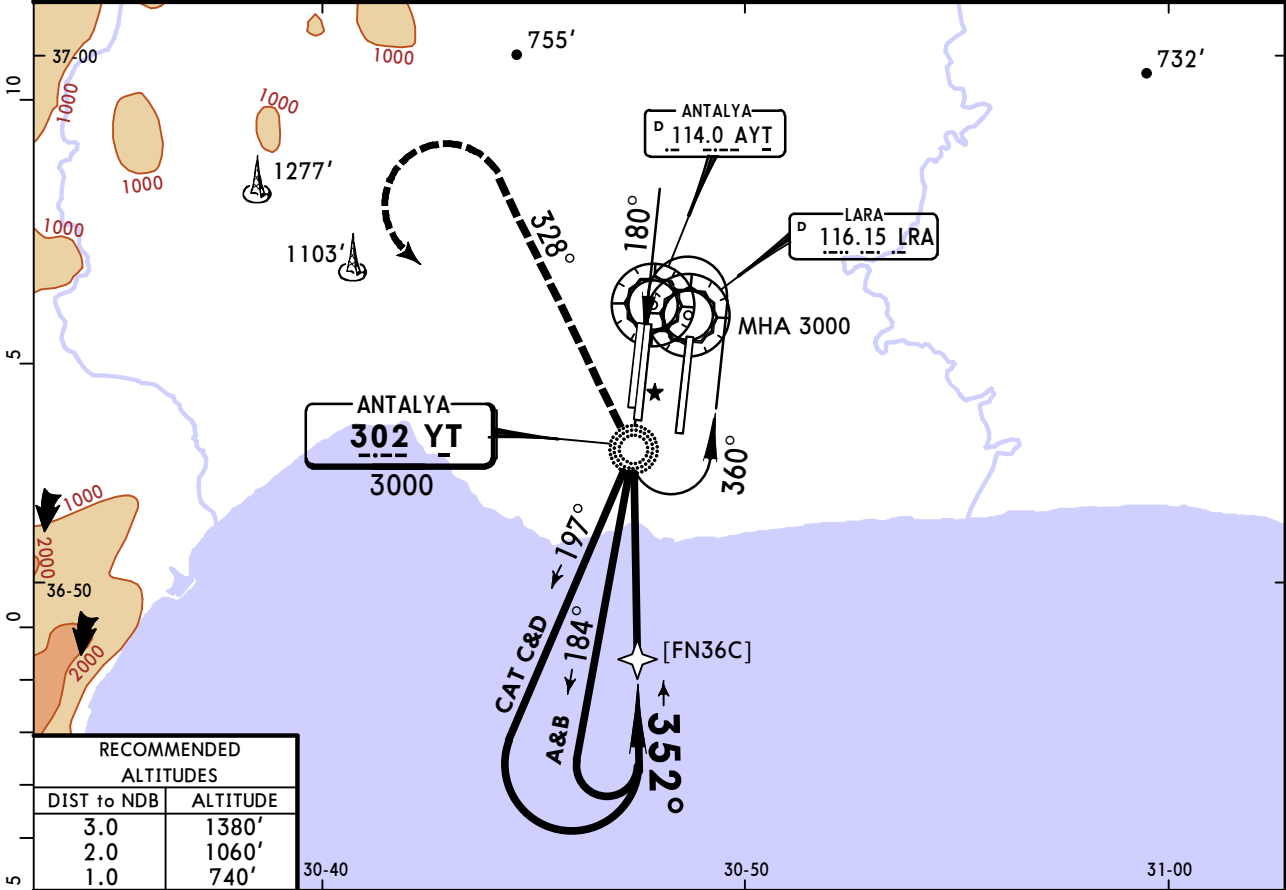
© JEPPESEN, 2007, 2025. ALL RIGHTS RESERVED.

LTAI/AYT  
ANTALYA INTL

**JEPPESSEN**  
9 MAY 25 **16-2** Eff 15 May

ANTALYA, TURKIYE  
NDB Z Rwy 36C

D-ATIS Arrival	ANTALYA Approach (R)			ANTALYA Tower			Ground		
118.275	119.025	124.350	124.425	119.8	120.125	126.1	119.85	121.7	121.9
NDB YT <b>302</b>	Final Apch Crs <b>352°</b>	No FAF	DA/MDA(H) <b>630'</b> (456')	Apt Elev 177'  Rwy 174'					
MISSED APCH: Turn LEFT and climb on 328° from NDB to 1800', then turn LEFT climbing to 3000' to NDB and hold. MAX 185 KT until inbound NDB.							MSA YT NDB		
Alt Set: hPa		Rwy Elev: 6 hPa		Trans level: By ATC		Trans alt: 15000'			



Gnd speed-Kts	70	90	100	120	140	160	HIALS REIL PAPI	185 KT MAX	1800' LT	328° from YT 302
Descent Angle 3.00°	372	478	531	637	743	849				
MAP at NDB										

Std/State			STRAIGHT-IN LANDING			CIRCLE-TO-LAND		
			CDFA					
			DA/MDA(H) <b>630'</b> (456')					
			ALS out			Max Kts	MDA(H)	
A	R1400m		R1500m			100	1100' (923')	V1500m
B						135	1100' (923')	V1600m
C						180	1100' (923')	V2400m
D			R2100m			205	1100' (923')	V3600m

VNAV DA(H) in lieu of MDA(H) depends on operator policy.

CHANGES: Bearings.

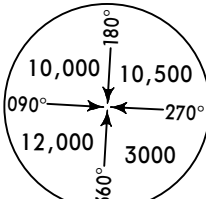
© JEPPESSEN, 2001, 2025. ALL RIGHTS RESERVED.

LTAI/AYT  
ANTALYA INTL

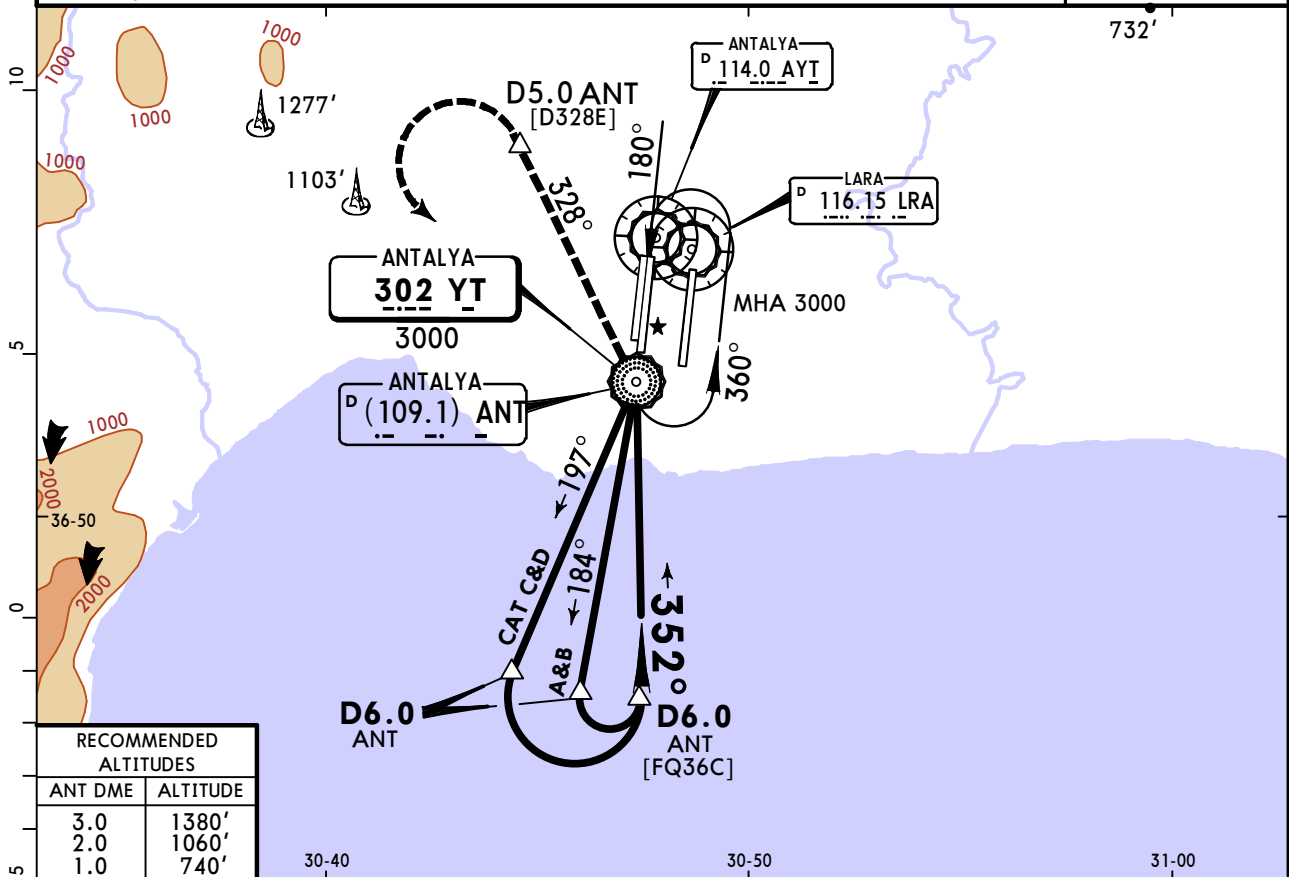
JEPPESEN  
9 MAY 25 **16-3** Eff 15 May

ANTALYA, TURKIYE  
NDB Y Rwy 36C

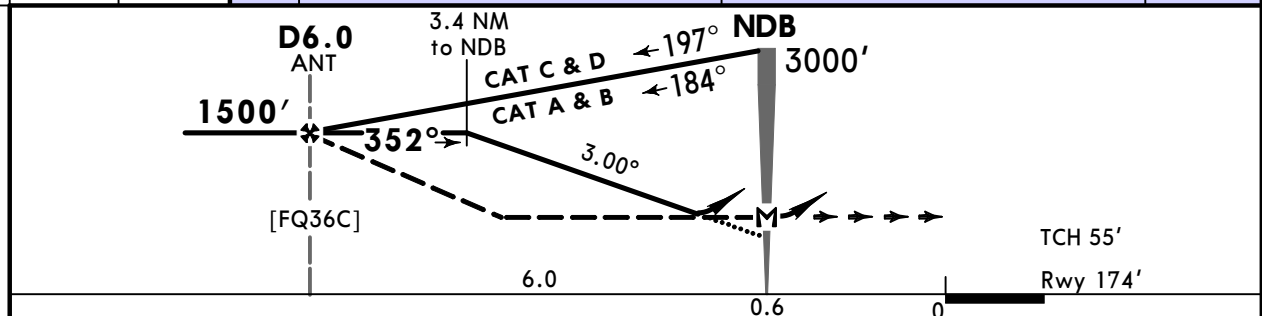
BRIEFING STRIP™

D-ATIS Arrival		ANTALYA Approach (R)				ANTALYA Tower			Ground			
118.275		119.025 124.350 124.425				119.8 120.125 126.1			119.85 121.7 121.9			
NDB YT <b>302</b>		Final Apch Crs <b>352°</b>		D6.0 ANT <b>1500'</b> (1326')		DA/MDA(H) <b>620'</b> (446')		Apt Elev 177'  Rwy 174'				
<b>MISSED APCH:</b> Turn <b>LEFT</b> and climb on <b>328°</b> from NDB to <b>1800'</b> , then turn <b>LEFT</b> (not before D5.0 ANT) climbing to <b>3000'</b> to NDB and hold. MAX 185 KT until inbound NDB.												
Alt Set: hPa		Rwy Elev: 6 hPa		Trans level: By ATC		Trans alt: 15000'						
DME required.												

MSA YT NDB



RECOMMENDED ALTITUDES	
ANT DME	ALTITUDE
3.0	1380'
2.0	1060'
1.0	740'



Gnd speed-Kts	70	90	100	120	140	160	<div><div>HIALS</div><div>REIL</div><div>PAPI</div></div>	185 KT MAX	1800' LT	328° from YT 302
Descent Angle 3.00°	372	478	531	637	743	849				
MAP at NDB										

Std/State		STRAIGHT-IN LANDING				CIRCLE-TO-LAND	
		CDFA		non-CDFA			
		1 DA/MDA(H) 620'(446')		MDA(H) 620'(446')			
		ALS out		ALS out		Max Kts	MDA(H)
A	R1400m	R1500m		R1600m		100	1100'(923') 2 V1500m
B		R1500m		R1600m		135	1100'(923') 2 V1600m
C		R2100m		R1800m		180	1100'(923') 2 V2400m
D		R2100m		R1800m		205	1100'(923') V3600m
1 VNAV DA(H) in lieu of MDA(H) depends on operator policy. 2 or higher straight-in minimums.							

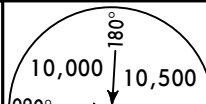
CHANGES: Bearings.

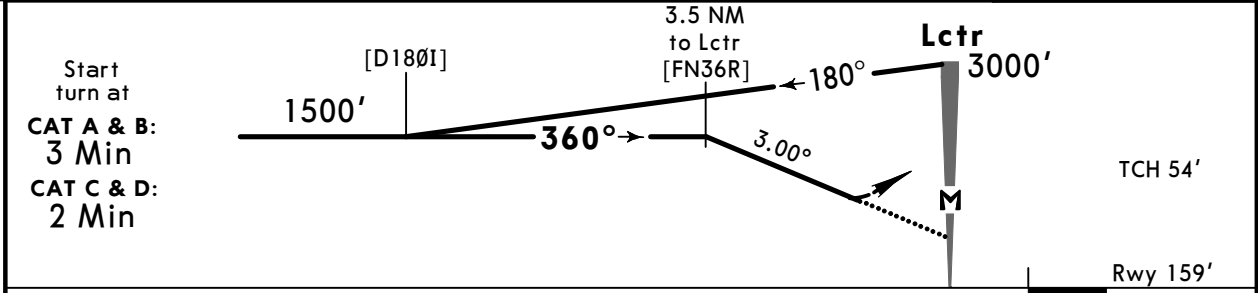
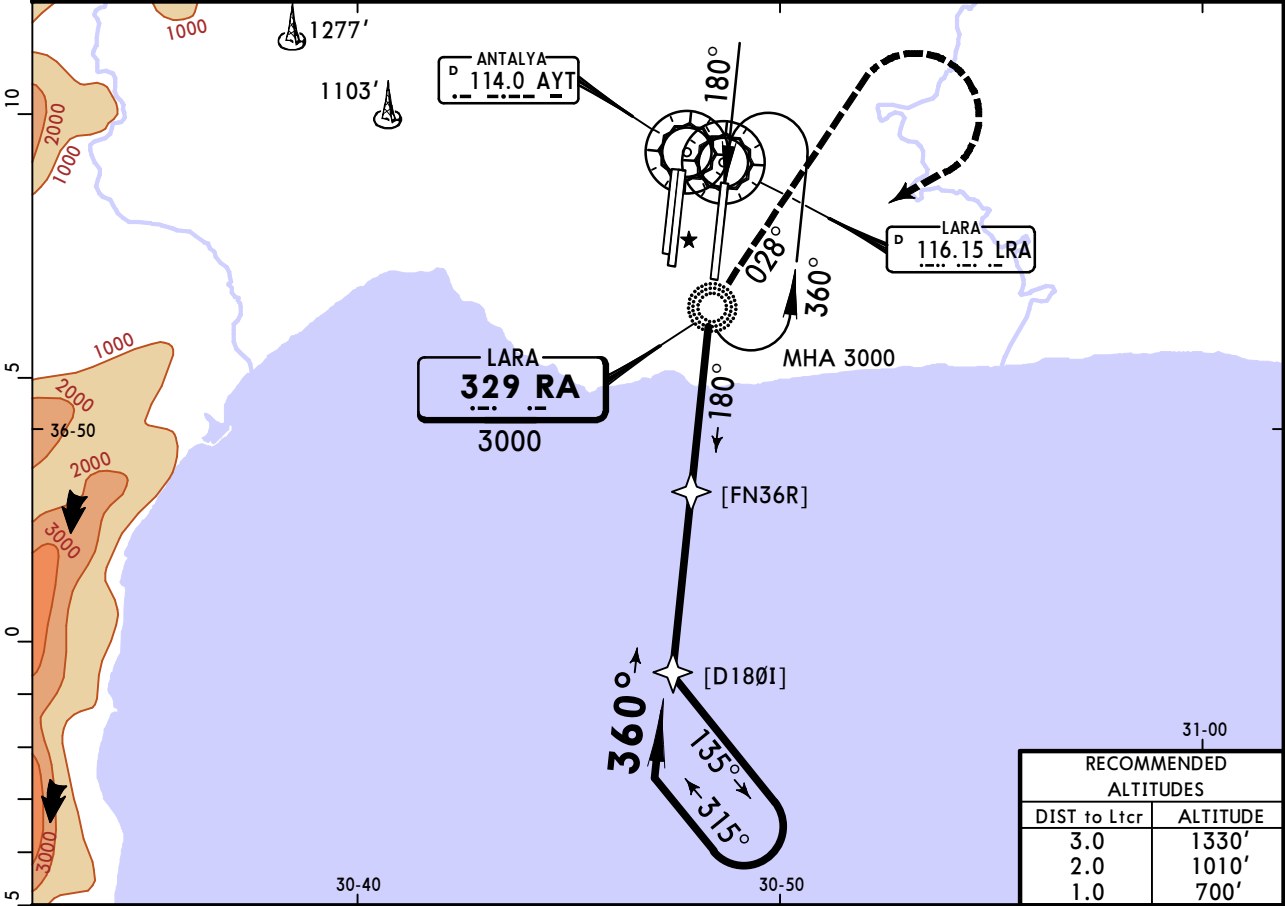
© JEPPESEN, 2001, 2025. ALL RIGHTS RESERVED.

LTAI/AYT  
ANTALYA INTL

JEPPESSEN  
9 MAY 25 16-4 Eff 15 May

ANTALYA, TURKIYE  
NDB Z Rwy 36R

BRIEFING STRIP™	D-ATIS Arrival	ANTALYA Approach (R)			ANTALYA Tower			Ground		
	118.275	119.025	124.350	124.425	119.8	120.125	126.1	119.85	121.7	121.9
	Lctr RA <b>329</b>	Final Apch Crs <b>360°</b>	No FAF		DA/MDA(H) <b>620'</b> (461')	Apt Elev 177'  Rwy 159'		 MSA RA Lctr		
	MISSED APCH: Climb on 028° from Lctr to 1500', then turn RIGHT climbing to 3000' to Lctr and hold.									
	Alt Set: hPa		Rwy Elev: 6 hPa		Trans level: By ATC			Trans alt: 15000'		



Gnd speed-Kts	70	90	100	120	140	160	ALSIF-II REIL PAPI	1500' on ↑ 028° from RA 329
Descent Angle	3.00°	372	478	531	637	743		
MAP at Lctr								

PAINS OPS	Std/State		STRAIGHT-IN LANDING			CIRCLE-TO-LAND		
			CDFA					
			DA/MDA(H) 620' (461')					
			ALS out			Max Kts	MDA(H)	
	A	R1500m	R1500m			100	1100' (923')	V1500m
B						135	1100' (923')	V1600m
C						180	1100' (923')	V2400m
D			R2200m			205	1100' (923')	V3600m

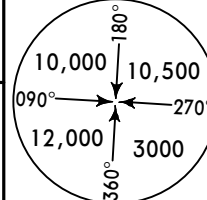
VNAV DA(H) in lieu of MDA(H) depends on operator policy.

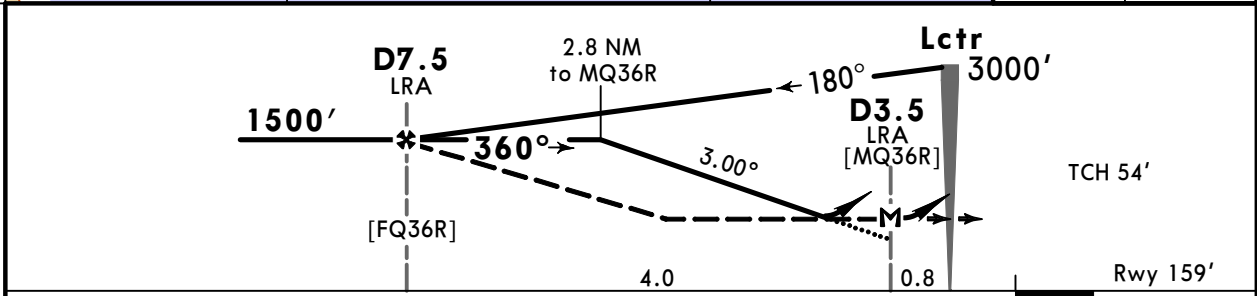
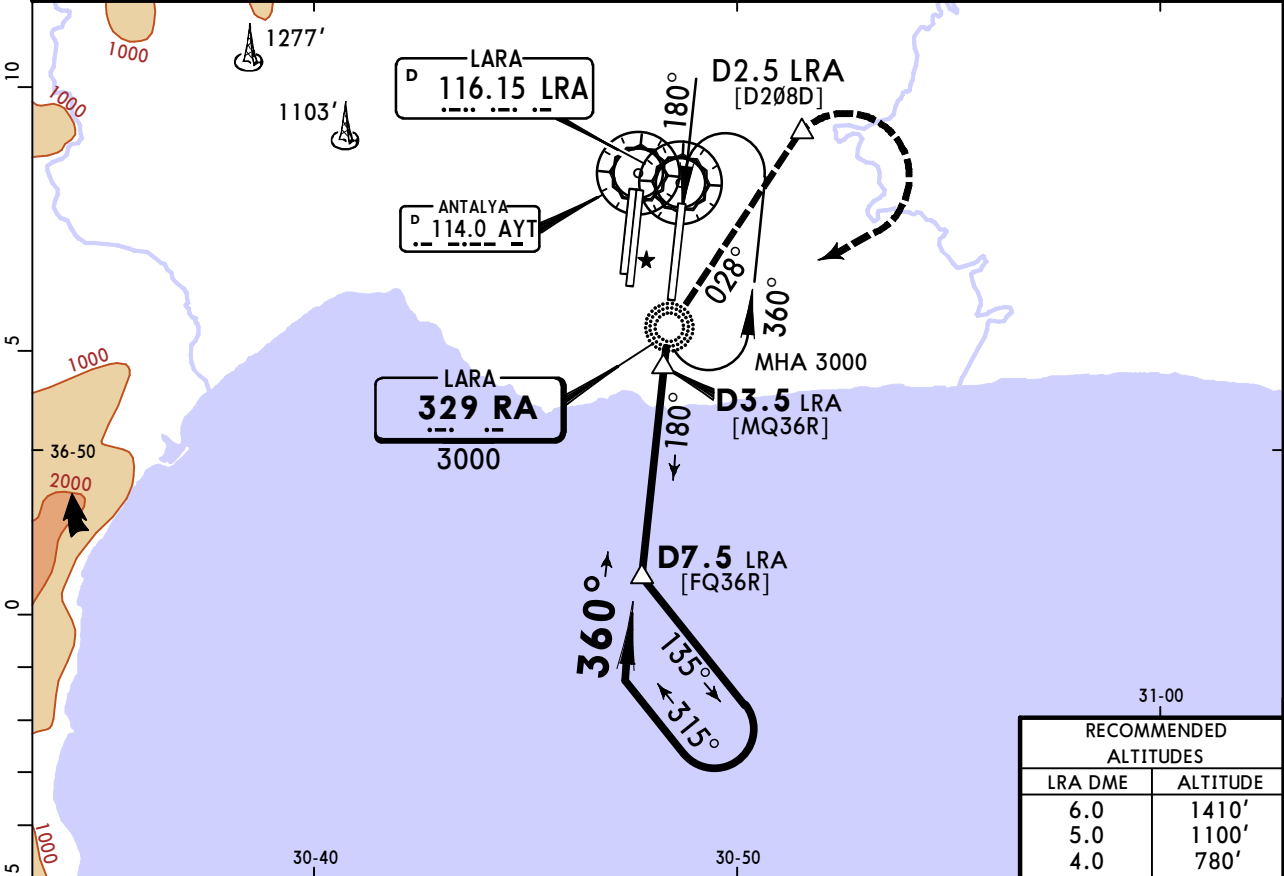


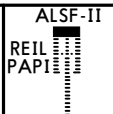
LTAI/AYT  
ANTALYA INTL

JEPPESEN  
9 MAY 25 **16-5** Eff 15 May

ANTALYA, TURKIYE  
NDB Y Rwy 36R

D-ATIS Arrival	ANTALYA Approach (R)				ANTALYA Tower			Ground		
118.275	119.025	124.350	124.425	119.8	120.125	126.1	119.85	121.7	121.9	
Lctr RA <b>329</b>	Final Apch Crs <b>360°</b>	<b>D7.5 LRA</b> <b>1500'</b> (1341')		<b>DA/MDA(H)</b> <b>590'</b> (431')		Apt Elev 177'  Rwy 159'				
<b>MISSED APCH:</b> Climb on 028° from Lctr to 1500', then turn <b>RIGHT</b> (not before D2.5 LRA) climbing to 3000' to Lctr and hold.										
Alt Set: hPa		Rwy Elev: 6 hPa		Trans level: By ATC		Trans alt: 15000'				
DME required.										



Gnd speed-Kts	70	90	100	120	140	160		<b>1500'</b> on <b>028°</b> from RA <b>329</b>
Descent Angle	3.00°	372	478	531	637	743		
MAP at D3.5 LRA								

Std/State		STRAIGHT-IN LANDING				CIRCLE-TO-LAND	
		CDFA		non-CDFA			
		DA/MDA(H) <b>590'</b> (431')		MDA(H) <b>590'</b> (431')			
		ALS out		ALS out		Max Kts	MDA(H)
A	R1300m	R2000m		R1500m	R2200m	100	1100' (923') <b>2</b> V1500m
B						135	1100' (923') <b>2</b> V1600m
C						180	1100' (923') V2400m
D				R1700m	R2400m	205	1100' (923') V3600m

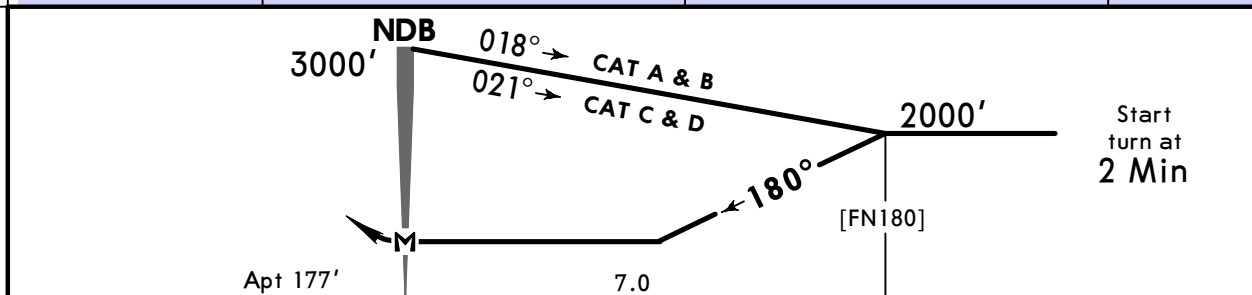
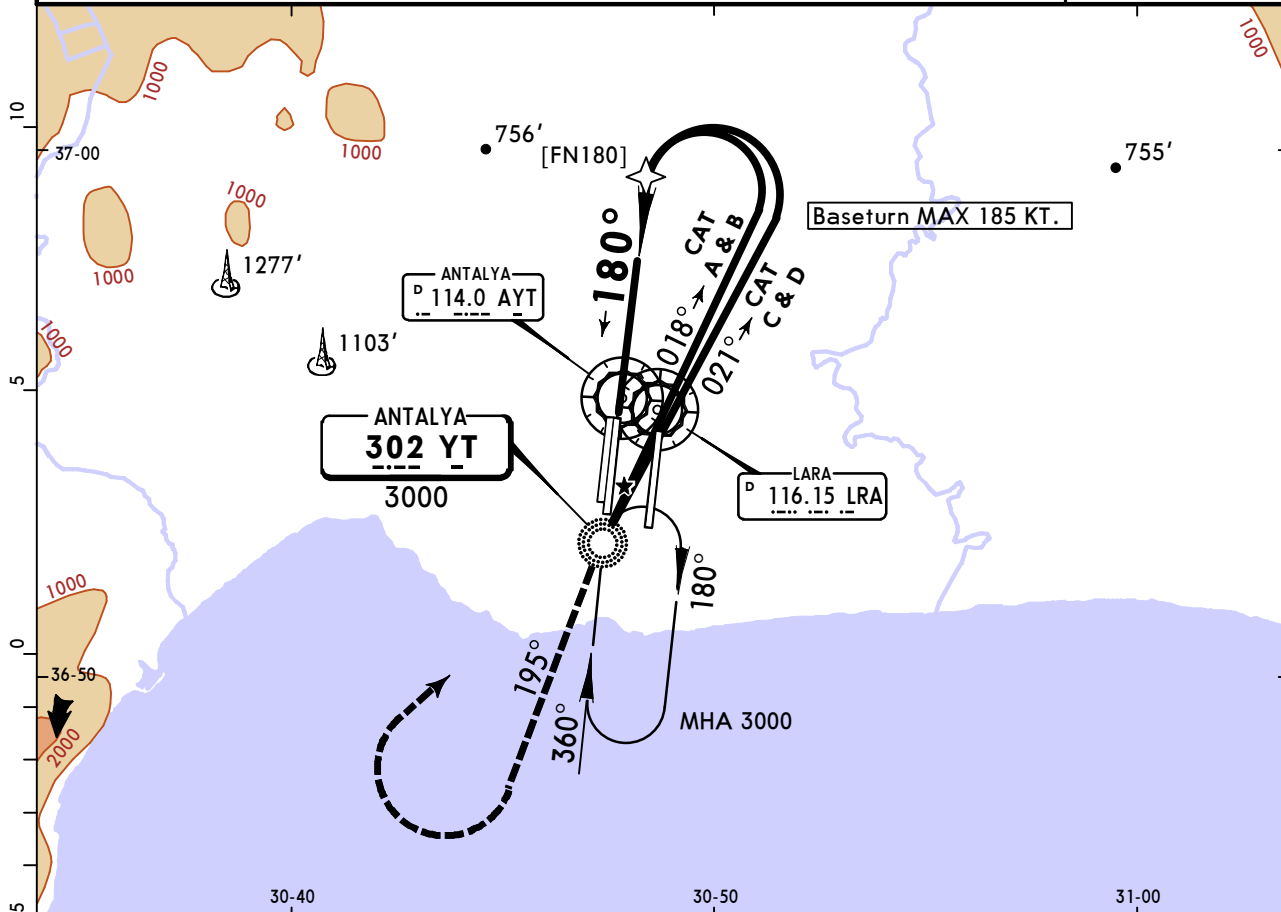
**1** VNAV DA(H) in lieu of MDA(H) depends on operator policy. **2** or higher straight-in minimums.

CHANGES: Bearings.

© JEPPESEN, 2007, 2025. ALL RIGHTS RESERVED.

**ANTALYA, TURKIYE**  
**NDB-A**

D-ATIS Arrival	ANTALYA Approach (R)			ANTALYA Tower			Ground		
118.275	119.025	124.350	124.425	119.8	120.125	126.1	119.85	121.7	121.9
NDB YT <b>302</b>	Final Apch Crs <b>180°</b>	No FAF	MDA(H) <b>1100'</b> (923')	Apt Elev 177'					
<b>MISSED APCH:</b> Climb on 195° from NDB to 2000', then turn RIGHT climbing to 3000' to NDB and hold.									
Alt Set: hPa		Apt Elev: 6 hPa		Trans level: By ATC		Trans alt: 15000'			
Straight-in not authorized.							MSA YT NDB		

[illegible]

CIRCLE-TO-LAND

	Max Kts	MDA(H)	
A	100	1100' (923')	V1500m
B	135	1100' (923')	V1600m
C	180	1100' (923')	V2400m
D	205	1100' (923')	V3600m